

EDITION 6 SUMMER

# THE sharp TRAVELLER



Melbourne  
THE CHRISTMAS CAPITAL

## HOLIDAYS



A TASTE OF THE  
GOURMET FARMER

## FINANCE



SELF MANAGED  
SUPER?

## FOOD



ECLECTIC COOKING  
WITH ROSA

## EVENTS



MYER'S SPECTACULAR  
CHRISTMAS



TAKE HOME YOUR SLICE OF *Paradise*

Flinders Island Meat is one of the most sought after brands by some of Australia's top chefs. The salty pastures, the ideal climate, and old style honest farming practices combine to produce a meat that is hard to beat.

You too can experience the Flinders Island difference, at our dedicated butcher shop. Sample our unique Wallaby, or try some of the best Prime Lamb and Angus Beef you will find anywhere. Then take home your own slice of *Paradise*.

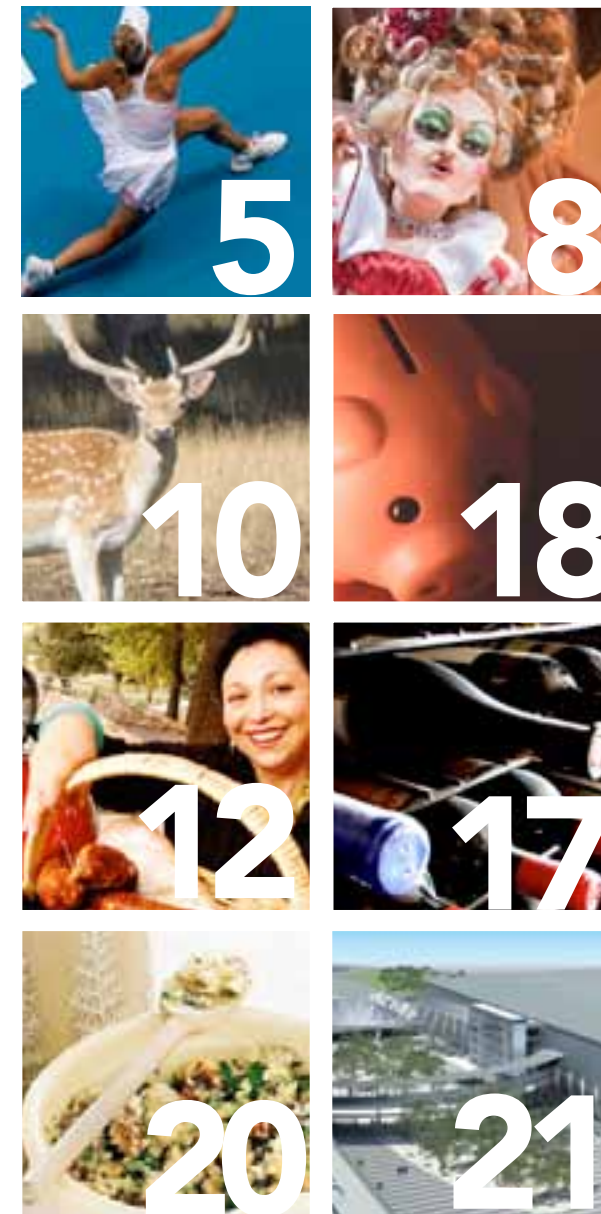
*Taste The Difference*

**FLINDERS ISLAND**  
*Meat*

Flinders Island Meat Butcher Shop, 3 Walker St, Whitemark, Flinders Island  
Ph: (03) 8359 2005



**Contents**



What's On . . . . . 5  
 The Sharp Files . . . . . 6  
 Myer Christmas Windows. . . . . 8  
 Flinders Island - A new way to choose the menu . . . . . 10  
 Cooking with Rosa . . . . . 12  
 Sharpen Your Christmas Shopping Skills . . . . . 14  
 Hamilton - Naturally Rich. . . . . 16  
 Cool Climate Wines of the Henty . . . . . 17  
 Finance - Self Managed Superannuation . . . . . 18  
 Recipes - Christmas Cooking . . . . . 20  
 Business Profile . . . . . 21  
     > Adelaide Airport - Planning for Growth. . . . . 21  
 Sharp Minds . . . . . 22  
 Sharp Kids . . . . . 23  
 Flight Schedules . . . . . 24  
     > Melbourne (Essendon) . . . . . 24  
     > Geelong (Avalon) . . . . . 24  
     > Adelaide . . . . . 25  
     > Flinders Island & Launceston . . . . . 25  
 Where we Fly . . . . . 26

**STONE**

BUSINESS ADVISERS &  
CHARTERED ACCOUNTANTS

- Business Advisory
- Accounting
- Taxation
- Financial Management
- Superannuation
- Corporate Affairs
- Consulting



"We have developed a young team of highly skilled professionals to support your business."



P + 61 3 5523 2287  
W [stoneba.com.au](http://stoneba.com.au)

ADELAIDE

PORTLAND

MELBOURNE



## Sharp Contacts

**T: 1300 55 66 94**

F: 03 5574 8258

E: [reservations@sharpairlines.com.au](mailto:reservations@sharpairlines.com.au)

W: [sharpairlines.com.au](http://sharpairlines.com.au)

### Head Office

Hamilton Airport  
Hensley Park Rd  
Hamilton VIC 3300

### Adelaide Office

Sir Richard William Ave  
Adelaide Airport SA 5950

### Melbourne Office

Main Terminal  
Essendon Airport  
Hargrave Ave  
Essendon Fields VIC 3041

### Portland Office

Main Terminal  
Portland Airport  
Cashmore Road  
Portland Airport VIC 3305

### Flinders Island Office

Main Terminal  
Flinders Island TAS 7725

### Launceston Office

Evandale Road  
Western Junction TAS 7212

### Media & Marketing

Organised Success  
T: 1300 30 48 03  
E: [marketing@sharpairlines.com.au](mailto:marketing@sharpairlines.com.au)



## Managing Director's Welcome

Dear Sharp Travellers

Hasn't the year gone quickly? Here at Sharp Airlines we have had one of our best years to date, with increasing passenger numbers and a number of innovations that have made us one of the country's most successful regional airlines.

This year we have added the important Hamilton-Adelaide route, which has successfully opened up a new region for tourism and economic activity. We have also created our first passenger loyalty program, SharpFlyer, which offers a range of benefits for the many people who fly regularly with us.

Our pilot training program, in particular SharpCadet, has also been going from strength to strength, with a raft of satisfied students attesting to the quality of our training and their readiness for a career in the aviation industry.

With summer upon us, we hope that you will think of Sharp Airlines when planning your holiday to visit to friends and family. We will guarantee you a safe and comfortable journey to a range attractive destinations which you can read about in this edition of Sharp Traveller.

I would like to thank you – our passengers – for being part of a great year for Sharp Airlines. Of course we would not be here without you, and we hope that our commitment to your safety and comfort has not only met, but exceeded your expectations.

Safe and happy travelling,

**Malcolm Sharp**

Managing Director

## What's On...

### MELBOURNE

#### New Year's Eve

The countdown to Melbourne's 2011 New Year's Eve celebrations has begun! Melbourne will come alive with live music and performances, a massive lighting and projections program and, of course, fireworks. To herald the new year, the City of Melbourne is presenting two dazzling fireworks displays.

A full program of events, locations and some big surprises will be announced soon, so stay tuned.

web: [melbourne.vic.gov.au](http://melbourne.vic.gov.au)

#### Australian Open Tennis



Melbourne Park, Jan 16 to 29

The eyes of the world zone in on this vibrant precinct as the best tennis players on the planet fight it out for one of the biggest Grand Slam titles the sport has to offer.

Web: [australianopen.com](http://australianopen.com)

### HAMILTON

#### Penshurst BOXING DAY Races



Sunday 26 December

Continue the Christmas celebration with family and friends at the Annual Penshurst BOXING DAY races.

The kids will be happily catered for with the wonderful list of FREE activities available through Camp Australia.

Web: [countryracingvictoria.com.au](http://countryracingvictoria.com.au)

Adelaide and surrounds,  
from January 15 to 22.

The first stop on the world cycling calendar, the Santos Tour Down Under is the biggest cycling race in the southern hemisphere. Watch the heroes of the peloton as they race past Adelaide, Australia's outstanding beaches and world famous wine regions.

Web: [tourdownunder.com.au](http://tourdownunder.com.au)

### FLINDERS ISLAND

#### Music In the Vines

14th of January

We are excitedly looking forward to our next Music in the Vines on the 14th of January 2012 where we will have a number of local and visiting musicians performing in the vines

Web: [unavale.com.au](http://unavale.com.au)

### PORT AUGUSTA

#### Christmas Pageant

Corner of Commercial Road and Gibson Street, Port Augusta on Friday December 2 from 6.30pm.

Come along and join in the fun of the annual Port Augusta Christmas Pageant. There is plenty of free Christmas fun for all the family.

Phone: 0428 101 990

#### Port Augusta Open Water Swim

Port Augusta Yacht Club,  
Port Augusta, Sunday January 8.

The ocean swim is an annual amateur swim event part of the Masters circuit which attracts swimmers from across Australia.

Phone: 08 8642 2967

### LAUNCESTON

#### Breath of Fresh Air Film Festival

Launceston, November 23 to 27.

The Tasmanian Breath of Fresh Air (BOFA) Film Festival is a celebration of fresh perspectives and innovative approaches to screen-based story telling that inspire positive change.

Email: [bofa.com.au](mailto:bofa.com.au)

## The Furneaux Tavern

Flinders Island Tasmania



Situated on the waterfront the Furneaux Tavern is a favourite meeting place for locals and visitors and has one of Flinders Island's best views from the bar.

The Furneaux Tavern offers comfortable accommodation with 12 motel style units set amongst an acre of native gardens and magnificent water views.

The Tavern offers bistro dining in the Shearwater Restaurant, which serves local produce 7 days a week all year round.

Phone: 03 6359 3521

[furneauxtavern.com.au](http://furneauxtavern.com.au)

## SharpFlyer rewarding your loyalty

Sharp Airlines has launched its loyalty program the - SharpFlyer, which provides a range of benefits for its members.

As a SharpFlyer member you will receive exclusive benefits, special offers and promotions. Anyone can become a SharpFlyer and it's FREE!

### JOIN NOW ...

It takes 2 minutes online and doesn't cost a cent. You will receive your membership number and password immediately by email

» Your SharpFlyer card will be sent to you within 30 days

Visit [sharplines.com.au](http://sharplines.com.au) to join.

### SharpFlyer Benefits

- » Your own SharpFlyer membership number and card
- » Streamlined reservation process
- » Ability to update your own details at any time and provide special requests
- » Advance notice on sale fares, promotions and holiday packages
- » Exclusive offers, specials and promotions
- » Bi-monthly Sharp Airline e-news
- » Access to member only benefits and future competitions
- » We will try to accommodate your particular requests

The WINNER of the \$2000 of Sharp travel is MR MICHAEL MATHIEU from Flinders Island.

CONGRATULATIONS Michael and thankyou to all SharpFlyers.

### Did you know...

1. Melbourne is the only city in the world that has five international standard sporting facilities (including three with retractable roofs) on the fringe of its central business district.
2. Luna Park, in Melbourne's bayside suburb of St Kilda, is the world's oldest amusement park under private management.
3. Geelong is the second most populated city in Victoria and the fifth most populated non-capital city in Australia.
4. Of the Australian capital cities, Adelaide is the driest.
5. Adelaide is the capital of the only Australian state never to have received convicts.
6. Hamilton calls itself the 'Wool Capital of the World'.
7. Port Augusta is known as the 'Crossroads of Australia' - where roads from Adelaide, the Flinders Ranges, Alice Springs, Perth and Whyalla all intersect.
8. Flinders Island was first colonised at least 35,000 years ago, when people made their way across the then-land bridge which is now Bass Strait.
9. Flinders Island is approximately 62 km from north to south, and 37 km from east to west.
10. Launceston is the first Australian city to have underground sewers.

## Sharp Airlines provides daily passenger & freight services to Flinders Island from Melbourne (Essendon) and Launceston.

### VISITING FLINDERS ISLAND FROM MELBOURNE

Our Flinders Island services depart daily from Essendon Airport, Melbourne's most accessible airport. Sharp Airlines' 19 passenger services will transport you to the beautiful Flinders Island in just over an hour. Continue your Tasmanian adventure by flying to picturesque Launceston in just 35 minutes; in Launceston you're seldom without a view of the Tamar River, and the shopping and dining experiences are truly unique.

### VISITING FLINDERS ISLAND FROM LAUNCESTON

Departing from Launceston Regional Terminal, less than a 1km from Launceston's Main Terminal, Sharp Airlines will take you away to the beautiful Flinders Island in just

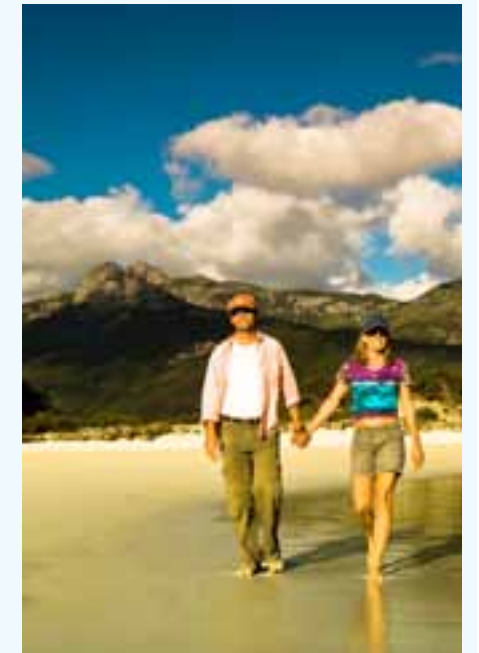
35 minutes. Return to Launceston on one of our daily services or continue your journey to Melbourne; Melbourne boasts glamorous festivals and events, a lively passion for eating and drinking, and a flourishing interest in the arts.

### FREIGHT SERVICES

Sharp Airlines provides daily freight services to and from Flinders Island and throughout our interstate network, transporting anything from fresh produce to documents to spare parts, we can provide reliable daily freight services.

### RESERVATIONS

To make a reservation use our online booking system or call our friendly Reservations Team - telephone: 1300 55 66 94.



## New SharpCadeT website

Sharp Airlines' SharpCadeT program is increasing in popularity every year, making it one of Australia's most respected and successful pilot training programs.

In fact, SharpCadeT is so successful that it now has its own website - [www.sharpcadet.com.au](http://www.sharpcadet.com.au) - which provides all the information you need to show why our pilot training is so highly valued within the industry.

SharpCadeT is the longest-running cadet course in Australia (over 21 years), the most

complete hands-on course in Australia, has the lowest instructor-trainee ratios in Australia (1:5), and is the only course to guarantee you a 12-month cadetship.

[sharpcadet.com.au](http://sharpcadet.com.au) contains information on courses and career paths, as well case studies from some of our graduates who have shared their stories of successfully gaining qualification and reaching their career goals - all thanks to Sharp Airlines.

[sharpcadet.com.au](http://sharpcadet.com.au)

### Sharp Airlines Office Hours

RESERVATIONS & ENQUIRIES - 1300 55 66 94

Monday to Friday - 7am to 7pm EST

Saturday - 8am to 12pm EST

Sunday - 1pm to 6pm EST

Public Holidays - 10am to 5pm EST

CLOSED - Good Friday and Christmas Day

sharp airlines

daily passenger & freight services

to Flinders Island from Launceston & Melbourne (Essendon)

Reservations - 1300 55 66 94  
Launceston Office - (03) 6391 8954  
Flinders Island Office - (03) 6359 2312  
[www.sharplines.com.au](http://www.sharplines.com.au)



# Myer Christmas Windows

## A Melbourne Christmas Tradition

There are Christmas displays, and there are Myers Christmas Windows. The stunning creations are in a league of their when it comes to celebrating the gift-giving season.

Each year the store adorns its windows and more than one million Australians and overseas visitors view the iconic Myer Christmas Windows to see the specially selected theme from a story book, nursery rhyme, a film or even the theatre. The window displays creators' manage to bring to life an animation spectacular that ignites the imagination and Christmas spirit in everyone.

Part of the excitement about the windows is the mystery of the theme. Each year the new theme of the windows is kept under lock and key while the clever window design creators work their magic for more than six months to bring this Christmas tradition to Myer's many Christmas visitors.

The windows are so popular huge queues fill the Bourke Street Mall in Melbourne as people line up to experience the windows. In previous years the Myer Christmas Windows have brought to life Christmas stories including The Twelve Days of Christmas, How the Grinch Stole Christmas, A Christmas Carol and How Santa Really Works. Some of the fairy tales shown through the windows including

Peter Pan, Sleeping Beauty, Snow White and the Seven Dwarfs and children's story books including The Wizard Of Oz, Wombat Divine, Snugglypot and Cuddlepie while last year's theme was Olivia Helps With Christmas.

### Up Close

#### MYER CHRISTMAS WINDOWS

Where: Myer Store, Bourke Street, Melbourne.

Open: Friday 4th November 2011 until 5:00pm Sunday 8th January 2012.

Cost: FREE



## SANTALAND

A visit to Myer's Santaland is the next best thing to Christmas morning for kids, with FREE interactive games and activities on offer for kids of all ages.

Pick up a golden ticket from the Station Master and ride the locomotive train through the tunnel, waving to mum and dad as the train tours the Santaland village.

Then visit Santa and his special friend Rudolph the Red Nosed Reindeer, where you can have your picture taken.

Before you leave, make sure you post your Christmas wishlist in the special Santa mailbox, which delivers your letter direct to the North Pole!

Visit Santaland at Myer Melbourne, Sydney City, Brisbane City, Pacific Fair, Adelaide and Perth on the following dates:

Myer Melbourne: Friday 4th November

Myer Adelaide: Sunday 12th November

## MYER TO HOST A SPECTACULAR CHRISTMAS CELEBRATION!

Myer will bring the Bourke Street Mall to life in a huge Christmas Spectacular in front of the Myer Melbourne store on Saturday 19 November. The Myer Christmas Spectacular, presented by the City of Melbourne, will be an exciting day of free family entertainment headlined by a performance from Guy Sebastian and other leading Australian artists and popular children's characters.

This year is the first Christmas for the new Myer Melbourne flagship store and the Myer Christmas Spectacular will be a great way to mark this special occasion. Myer CEO Bernie Brookes is excited about the event and feels that it will be a great way to bring the City of Melbourne together and to celebrate the spirit of Christmas.

"The Myer Christmas Spectacular will be a fantastic day of fun activities for the whole family to enjoy. This new concept allows us to engage a greater audience throughout the day with activities and performances to

suit different age groups. We know this will be a fantastic event that will bring Myer and the City of Melbourne together to officially launch Christmas in the city."

Lord Mayor Robert Doyle said the City of Melbourne is pleased to partner with Myer for the Christmas Spectacular.

"Christmas in the city is a special time of year and we want Melbourne to be recognized as the Christmas capital."

"The Myer Christmas Spectacular marks the beginning of weeks of festive fun in the city, from free entertainment and family activities through to Santa in Christmas Square and new and refurbished decorations, Melbourne will be alive with the spirit of Christmas," the Lord Mayor said.

As well as the live performances, the day will also feature children's characters, activities and sporting personalities.



## Gourmet Gift Hampers to suit everyone's tastes!

The perfect gift idea for Christmas!

Darriwill Farm hampers contain the finest gourmet provisions sourced from around the world. It's easy, select one of our pre-made hampers or design your own, making it the ideal corporate or private gift for any occasion. Enjoy!

Contact our friendly staff at the Hamilton store for more information 03 5571 2088



Gourmet Food, Gifts & Wine Merchants

Darriwill Farm - 169 Gray Street, Hamilton T: (03) 5571 2088 E: hamilton@darriwillfarm.com.au

# A NEW WAY TO CHOOSE THE MENU ON FLINDERS ISLAND

Partridge Farm offers guests the chance to surround themselves with amazing scenery and gourmet delights. And when owners Rob and Lorraine Holloway say 'surround' they really mean it.

Guests at the property can literally walk among the animals that are destined to be their dinner.

Rob said the farm not only offers attractive and tranquil accommodation, but guests can also indulge in the real taste of Flinders Island.

"Walking around here is like walking amongst a smorgasbord," he said.

"We have free range chickens, our own venison, dorper sheep, olive and fruit trees and a huge veggie patch.

"We even offer mutton bird for people who want to try something truly iconic."

Rob said Lorraine is a whiz in the kitchen and guests can enjoy their meals at the farm.

"Lorraine makes preserves from the fruit, and mulberry ice-cream is one of her specialities, people go crazy for it," he said.

## Up Close

PATRIDGE FARM, FLINDERS ISLAND

Cost: \$140-270

Tel: (03) 6359 3554

Email: [partridgefarmflinders@gmail.com](mailto:partridgefarmflinders@gmail.com)



"Because we really are a working farm the animals here are for food. They are lovingly cared for until it's time for them to join the menu.

"But we can also cook produce which guests bring back for us, whether they catch their own flathead or get a crayfish from the local fisherman."

Partridge Farm offers four star accommodation, with three private modern units all with spectacular views. There is a B&B bungalow and two self-contained units at the farm.

From any of the accommodation options guests can walk to the national park or beaches within minutes.



# Flinders Island's Partridge Farm

*A Unique Accommodation Experience...*

Four star accommodation with free range partridge, guinea pigs, Cape Barren geese, Rastus the alpaca, deer and dorper sheep, a large orchard, olive trees and vineyard.

Private modern units all with panoramic views of Franklin Sound

Each unit has a large wine and beer supply and meals prepared by Lorraine can be delivered to your unit, plus Rav4 4wd for hire

\* Venue of SBS Gourmet Farmer long table lunch

To find out more call Lorraine & Rob Holloway on 03 63593554



[www.visitflindersisland.com.au](http://www.visitflindersisland.com.au)





## Cooking with Rosa

Food and wine tours and cooking classes are becoming more and more popular. So when visiting the cuisine rich city of Adelaide, taking a cooking class is a great idea. There are a huge range of cooking classes available in the city and surrounding areas and a search of [www.southaustralia.com](http://www.southaustralia.com) shows the plethora of cooking classes, food, wine and produce tours available.

When in South Australia, use Adelaide as your base to make a day trip for a food and wine tour in the Barossa Valley, Coonawarra, Adelaide Hills or McLaren Vale wine regions. Or if you want to make your food and wine education a little more adventurous, you can board a charter and cruise at Port Lincoln's Cove Marina. On your cruise you will eat fresh oysters and sashimi, while drinking Boston Bay wine. Or take to the sky and fly over the Adelaide Hills and Fleurieu Peninsula in a helicopter and choose a winery to land at and enjoy a gourmet lunch at Kabminyie Winery.

But for an opportunity to really immerse yourself in the Adelaide cooking experience, a tour with one of the city's food pioneers is the way to go. Rosa Matto is an ambassador of the Adelaide Central Market and even starts her 'market to kitchen' tours there. Groups can meet at the iconic coffee house, Lucia's in the culinary heart of the city before Rosa takes them on a shopping trip for ingredients before going back into the kitchen to prepare an authentic Italian meal.

Rosa said her family originates from the Italian region of Campania, and that is where her passion for cooking has come from.

"A tradition we have staunchly maintained is that every special occasion is marked by a meal together," Rosa said.

Rosa said the whole family gets involved in the cooking of the meal and family members are flattered when she uses one of their recipes in her classes. She said the beauty of Italian food, and her cooking classes, is their simplicity and use of fresh produce.

"It is not surprising that I make my living from teaching people, children and adults alike, to appreciate fine, simple food – from the garden to the table," she said.

"At my cookery school in Goodwood I run many kinds of workshops, tours, demonstrations, practical classes and interesting dinners - all of them based on seasonal, local produce or an exploration of another culture."

Rosa offers an eclectic range of cooking classes to suit every taste, including imaginative vegetarian classes, flatbread classes, artisan pasta, what's hot in Paris, pasta sorcery, Croque-madame, fishing for compliments, grilling classes, Sicilian food, and even father and son cooking classes, and that is just the tip of the ice-berg. Rosa also does an Adelaide food lovers tour, which takes participants on a bus to visit some of Adelaide's best food retailers.

### Up Close

#### ROSA MATTO'S COOKING CLASSES

Where: Union Street, Goodwood, Adelaide.

Cost: From \$90

Tel: 08 8373 6106.

Web: [rosamatto.com](http://rosamatto.com)

# We're in it for the long haul

Adelaide Airport has its sights firmly set on the future. We've started building a new multi-storey car park and pedestrian plaza, and have plans to further expand our award-winning T1 terminal including better facilities for regional travellers.

Adelaide Airport continues to cater for more airlines flying from more destinations, both around Australia and overseas. You could have breakfast in Port Augusta and be enjoying noodles in Singapore or a rice dish in Bali by tea time.

To find out more - go to [www.adelaideairport.com.au](http://www.adelaideairport.com.au).





# Sharpen your Christmas Shopping Skills

Why not use Sharp Airlines to help you sharpen your shopping skills at some of these great destinations.

Wines from The Pinot Shop

## LAUNCESTON

### The Pinot Shop

Where: 135 Paterson Street, Launceston.

The Pinot Shop specialise in the best of premium pinot noir grown in the cool climes of Tasmania, New Zealand and southern parts of mainland Australia. They also stock pinot sibling styles pinot gris and grigio and fizzy cousins sparkling wine and Champagne, even when they don't contain pinot noir.

Web: [pinotshop.com](http://pinotshop.com).



## GEELONG

### The Red Pigeon

Where: 5/329 Pakington St, Newtown and 1c/45 Hitchcock Avenue, Barwon Heads.

The Red Pigeon is a treasure trove of stylish, must-have gifts and homewares. Located in funky Pakington Street Geelong, and the gorgeous Barwon Heads, it is a must-see destination for shoppers looking for that something special.

Web: [theredpigeon.com.au](http://theredpigeon.com.au)

## HAMILTON

### Mt Baimbridge Lavender

Where: 148 Beveridge Road, Hamilton.

Mt Baimbridge Lavender is set on 12 acres and nestled at the foot of Mt Baimbridge, just north of Hamilton. The shop and gallery sells lavender products for you, your home and even lavender products for your pet. Visitors can wander around the house garden and, of course, the fields of lavender.

Web: [mtbaimbridgelavender.com.au](http://mtbaimbridgelavender.com.au)

### Darriwill Farm

Darriwill Farm specialises in unique and exclusive gourmet food, giftware and boutique wines. The world's finest produce and wines are sourced direct from the farm gate, making Darriwill Farm a favourite destination for lovers of the best things life in the country offers. Can purchase on-line at:

Web: [darriwillfarm.com.au](http://darriwillfarm.com.au)



## FLINDERS ISLAND

### Palana Retreat, Flinders Island.

Palana Retreat can even organise an exclusive onsite massage for the ladies at the retreat from the island's resident Japanese therapist, Chi. This consists of Japanese Foot Bath, Reiki, Head & Shoulder Massage and Reflexology. What better way to relax.

Web: [palanaretreat.com.au](http://palanaretreat.com.au)

### The Gem Shop, Whitemark, Flinders Island.

Browse the sparkling gemstones while you listening to owner Thelma Shaik tell you stories from days gone by. If you love diamonds but can't afford the big prices, Flinders Island Topaz is the perfect purchase to own your own diamond, or buy them as gifts for your friends and relatives.

Email: [flindersinfo@bigpond.com](mailto:flindersinfo@bigpond.com)

## MELBOURNE

### The Pen Place

Where: Corner of Queen and Bourke Streets

The Pen Place is the place to shop for all your business and personal gifts. Offering a large range of pens, desk accessories, pen refills and leather goods, their friendly staff provide thorough old fashioned service.

Web: [thepenplace.com.au](http://thepenplace.com.au)

### The Paperback Bookshop,

Where: 60 Bourke Street

The Paperback Bookshop is an independent, general bookshop that was established in the early 1960s at the top of Bourke Street and was then one of the few Melbourne bookshops to sell a good selection of Australian and imported books.

Web: [paperbackbooks.com.au](http://paperbackbooks.com.au)

### Amo La Vida,

Where: 9/111 Cecil Street, South Melbourne

At Amo La Vida you will discover a gorgeous range of boutique homewares, decorative furniture and unique fashion accessories along with chic gift ideas for all. Think exotic, classic and stylish pieces from Australian designers blended with products sourced from all over the world.

Web: [Amolavida.com.au](http://Amolavida.com.au)

### boutiqueH.com.au

Looking for a small, unique Christmas gift?

boutiqueH.com.au have a range of handkerchiefs for women, men and children.

The handkerchiefs are made from fabrics around the world including Australia, England and Japan, only a selected number of each are made making them truly unique.

All handkerchiefs come beautifully packaged so no need for wrapping, they also have an on-line Gift Service.

Web: [boutiqueH.com.au](http://boutiqueH.com.au)

# FLINDERS ISLAND HOLIDAY PALANA RETREAT

Modern two storey, two bedroom, two bathroom accommodation with spa, open fire etc...

Overlooking Blyth Bay, Pratts River and the Inner and Outer Sister Islands.

Car available.

Liquor License and Free Internet access.

We offer a pickup and delivery service from Whitemark Airport.

Contact Judy Armstrong & Daryl Butler

Phone: (03) 6359 8566

Mobile: 0438 622 555

Email: [daryl@palanaretreat.com.au](mailto:daryl@palanaretreat.com.au)

Web: [www.palanaretreat.com.au](http://www.palanaretreat.com.au)

4756 Palana Rd, Flinders Island







# Hamilton

Naturally Rich.

Hamilton in Victoria's south west is rich in history and culture. The regional city and its surrounds are visually stunning, with heritage buildings dotting the CBD and gloriously positioned between the Grampians National Park and the southern coastline. The area matches its appearance with its diverse and interesting background, which can be experienced today through a range of activities.

Hamilton was formally declared in 1851 and the city is mainly known for its sheep grazing and wool growing heritage. In fact sheep grazing and agriculture are still the primary industries in the surrounding shire, with the area producing as much as 15 % of Australia's total wool clip. Visitors can learn about the wool industry at the Big Woolbales on Coleraine Road.

The grand wool growing heritage is also reflected in the city's many majestic buildings and surrounding homesteads with beautifully landscaped gardens. Treasures from the area's original homesteads can be viewed at the Hamilton Art Gallert, known throughout the world as one of the finest regional galleries in Australia. The Hamilton Art Gallery collection also includes 22 gouache by English painter Paul Sandby. The collection is the second largest in the world - Queen Elizabeth has the largest collection.

Hamilton's rich history also includes the former Australian airline, Ansett. Visitors can learn more about the airline's history at the Sir Reginald Ansett Transport Museum. Or for an overview of the city's history enjoy one of many historic walks signposted throughout the city, and make sure the heritage-listed Botanic Gardens are included on the walk.



## HAMILTON REGIONAL ART GALLERY

WHERE: Brown Street, Hamilton

COST: Free

PHONE: 03 5573 0460

EMAIL: [info@hamiltongallery.org](mailto:info@hamiltongallery.org)

## HAMILTON BOTANIC GARDENS

WHERE: French, Kennedy, Martin and Thompson streets, Hamilton

WHEN: Daylight hours daily

COST: Free

## SIR REGINALD ANSETT TRANSPORT MUSEUM

WHERE: Corner Ballarat Road and Riley Street, Hamilton

WHEN: Open daily 10am-4pm

COST: Adults \$4, Children and Pensioners \$2, Families \$8

PHONE: 03 5571 2767

EMAIL: [billsharp2@bigpond.com](mailto:billsharp2@bigpond.com)

## BIG WOOLBALES

WHERE: 230 Coleraine Road, Hamilton

WHEN: Open daily

COST: Free

PHONE: 03 5571 2810

EMAIL: [bigwoolbales@bigpond.com](mailto:bigwoolbales@bigpond.com)



# Cool Climate Wines of the Henty

Henty is a small wine region producing cool climate wines - aromatic white wines, luscious sweet desert wines and intense, finely structured reds. Located in the cool climate of south-west Victoria, Henty produces some of Australia's finest riesling, chardonnay, pinot noir and shiraz.

The region was named after the pioneer Henty family who settled at Portland in 1834 arriving on the "Thistle" that sailed from Launceston to Portland Bay. Recorded on the ship's log was one cask of grape vine cuttings. This is the first record of vines into Victoria.

Henty was established as a wine-producing area in the 1960's when Karl Seppelt planted a vineyard at Drumborg which, at the time, was the most southerly vineyard in Victoria. The region is situated among traditional farming land at around 38 degrees Latitude and enjoys a mild climate during the growing season, with some cooling influence from the southern ocean.

Together with the Macedon Ranges, this is the coolest of the wine growing regions of the Australian mainland and has presented local vignerons with the experience, unusual in Australia, of producing quality wines from grapes grown in quite cold temperatures.

## Henty Wine Region Tasting Notes

**CHARDONNAY** – Wines of a northern French character are starting to be produced with typical linden lime aromatics and fresh palates with lively acidity.

**RIESLING** – Riesling is made by all the wineries in the region. Fine, intense, gently lime-accented wines gradually assume toastier characteristics as they develop in bottle over a decade or more, but they do not lose their hallmark elegance. If the volume (or the number of wineries) was greater, this region would likely rank with Australia's best. The occasional Botrytised Riesling simply adds lustre to the overall performance of Henty Riesling.

**CABERNET SAUVIGNON** – The vintage conditions have to be favourable, but when they are, Cabernet (either alone or blended with Merlot and/or Cabernet Franc) is produced with striking similarities to a classified-growth Bordeaux (from the Haut Medoc) sometimes redolent of cassis, or otherwise tending more to cedar and cigar box.

**PINOT NOIR** – Around Hamilton, the vines of this variety are still very young although, as with Chardonnay, they show much promise.

**SPARKLING** – The three classic grape varieties of Champagne—Chardonnay, Pinot Noir and Pinot Meunier—account for more than half the total plantings, and are largely directed to Seppelt sparkling wine making.

*Tasting notes courtesy of Henty Farm Wines*

### Up Close

#### HENTY FARM WINES

Cellar doors, tours, accommodation and restaurants in the Henty wine region When: Tuesday 7am-5.30pm, Wednesday 9am-5.30pm, Thursday 9am-5.30pm, Friday 7am-9pm, Saturday 7am-3pm, Closed Sunday and Monday

Phone: 1300 997 881

Web: [hentywineries.com.au](http://hentywineries.com.au)



## Hamilton TOWNHOUSE MOTEL

Hamilton Travellers deserve 4 star comfort

- Corporate Rates Available
- Close to CBD
- Complimentary Astar and \*Wifi
- Room Service Breakfast and evening meals available
- Chargeback arrangements with the best Hamilton Restaurants
- Accommodation options - Deluxe Spa Room, Deluxe Queen Rooms, Townhouse Suite (3 br / 2 bathroom)

Hamilton Townhouse Motel 4 star and green star accredited.

Ph: (03) 5571 2517

[www.hamiltontownhouse.com.au](http://www.hamiltontownhouse.com.au)



# Self Managed Superannuation

Is it the right choice for you?

Self Managed Super Funds (or SMSFs) are fast becoming the vehicle of choice for the management of many Australian's retirement savings. Although SMSFs have traditionally been used by wealthy retirees and those approaching retirement, there has been a significant move by younger Australians to use a SMSF in which to house their superannuation.

This move has come as a result of wanting greater control and value from one of our biggest investments in the wake of the Global Financial Crisis and more recent share market and property market volatility, rather than leave it to fund managers.

We are also finding that the knowledge of our clients in relation to SMSFs has increased to a level where they now have a good understanding of the responsibilities and benefits of running their own SMSF.

Prior to SuperChoice being introduced in 2005/2006, most employees had their fund selected for them by their employer. This choice was generally a Retail Fund, leading to the rapid rise in popularity of both industry and non-industry managed retail funds. However, with changes to the SMSF legislative environment, and an increase in awareness of the rules surrounding SMSFs, we are now being asked the question "is a SMSF the right choice for me" on a regular basis.

The key components to look at with establishing and operating your own fund are:

1. The responsibilities required of the trustee/s; 2. The benefits of running and operating an SMSF; and 3. The costs associated with establishing and running an SMSF.

In many circumstances, the trustees of a SMSF are the persons whose money will be in the fund and the key trustee responsibilities include, but are not limited to:

- » making sure the purpose of the fund is to pay retirement benefits to members
- » organising an investment strategy and making investment decisions
- » accepting contributions and paying benefits (pension and lumps sums) in accordance with the super laws and the fund's trust deed
- » ensuring an approved auditor is appointed for each income year
- » undertaking administrative tasks such as lodging annual returns and record-keeping.

You must also ensure the fund's trust deed and investment strategy are regularly reviewed and updated in accordance with the law and the needs of the members.

Generally, the trustees will engage a Chartered Accountant or other adviser to assist them with these responsibilities.

A key driver and benefit of running an SMSF is the investment control and wider range of investment choice (such as direct shares, direct property, hedge funds, art work etc) that trustees have compared to other super funds. There are other benefits, such as Tax Control by way of internal structuring to ensure a minimum amount of tax is payable, and also

benefits associated with Estate Planning to ensure your family is looked after both during your retirement and after death.

A more recent development, which has also become very popular, is the ability of your SMSF to borrow money under special arrangements which now make it much easier for trustees to acquire direct property and other larger investments in their SMSF.

The main costs for a SMSF relate to the completion of the annual administration requirements of the fund, including preparation of Financial Statements, preparation of Income Tax Returns, Fund Administration and the Annual Audit.

For many people, the cost of running a SMSF can be significantly lower than that of an alternative superannuation fund, and, depending on your investments within your SMSF, there may be no adviser fees, fund manager fees or indirect administration fees.

If you have decided that a SMSF may be right for you and you can accept the trustee responsibilities, you should consult your accountant to discuss your options further.

Rodney Stone is the Director of STONE Business Advisers Pty Ltd and is a Chartered Accountant, Tax Agent, and Authorised Representative of Interprac Financial Planning (AFSL 246638).

Web: [stoneba.com.au](http://stoneba.com.au)

## Fast Facts

1. There are more than 450,000 SMSFs operating in Australia.
2. The average balance of each SMSF is \$966,000.
3. SMSFs hold more than a third of all money invested in Superannuation.
4. 40% of all new trustees are aged 45 years or younger
5. Nearly two thirds of all SMSFs are based in Victoria



## Is your business looking to reach a greater audience?



### Market Potentials

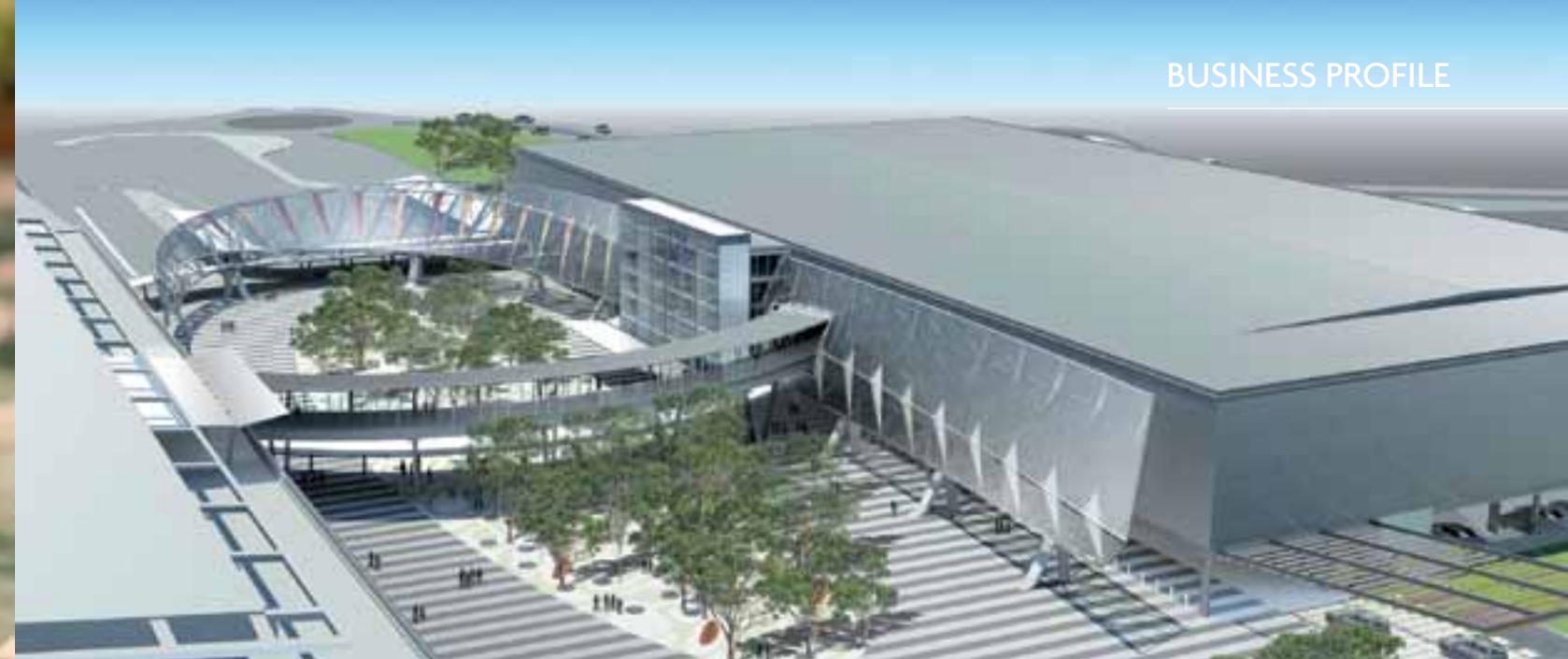
Target	
People 18-39	33,700
People 25-54	52,700
Grocery Buyers	57,500
Total People	136,600

Then use the "Power of Television". Southern Cross Media is Australia's largest regional Multi Media Company. Reach more Australians and put your Business Top of Mind. To find out how we can help your Business grow give us a call.



Ph: 08 8638 3400





# CHRISTMAS COOKING

## Asian Glazed Ham

### Ingredients

- 1 small (6-7kg) leg of ham
- about 36 whole cloves
- ½ cup soy sauce
- ½ cup pure maple syrup
- 2 tbs Chinese barbecue sauce
- 2-3 drops red liquid food colouring
- 2 garlic cloves, crushed
- 1 tsp five spice powder

### Method

Use a small sharp knife to cut around the end of the ham bone in a zigzag pattern. Run your fingers under skin and carefully lift it off in one piece, removing as little of the fat as possible. (Reserve the skin to cover the cut ham when storing.) Score the fat lightly (don't cut through to the meat) in a diamond pattern, then stud the centre of each diamond with a clove. Mix the remaining ingredients in a small bowl, then brush over the ham, reserving the excess. Refrigerate overnight.

Preheat oven to 160 degrees. Place ham on a rack over a large roasting pan filled with 1 cup hot water (this will prevent any marinade that drips down from burning). Brush ham with some reserved soy mixture, then bake for 40 minutes or until golden and well glazed.

Place the remaining soy sauce mixture in a small saucepan over low heat. Cook, stirring occasionally, for 2-3 minutes or until thickened. Brush over ham just before serving to enhance the glaze.

Source: Darriwill Farm, Hamilton & Tastse.com.au

## Spiced Pears



### Ingredients

- 4 small, firm pears
- 1 lemon, rind pared, fruit halved
- 1 cinnamon quill
- 4 whole cloves
- 2 bay leaves
- 300g caster sugar
- 1 cup (150gm) frozen cranberries, thawed

### Method

Peel, core and halve pears, then rub with cut side of lemon to keep from browning. Set aside. Place rind in a pan with spices, bay leaves, sugar and 500ml water. Stir over low heat to dissolve sugar, then add pears and cook over medium heat for 8-10 minutes until almost tender. Add berries and cook for 3-4 minutes until softened. Remove fruit to a serving dish with a slotted spoon, then return liquid to medium heat and simmer for 3-4 minutes until syrupy. Pour over fruit and cool.

## Pancetta, Sage & Onion Stuffing



### Ingredients

- 2 tbs sunflower oil
- 150g piece of pancetta, cut into 5mm cubes
- 2 brown onions, finely chopped
- 3 garlic cloves, crushed
- 2 tbs shredded sage leaves
- 3 tbs toasted pine nuts
- finely grated rind of 1 lemon
- ½ cup chopped flat leaf parsley
- 2 cups fresh sourdough breadcrumbs
- 2 eggs, lightly beaten

### Method

Heat the oil in a large frypan over medium-high heat. Add the pancetta and cook, stirring, for 2 minutes or until crisp and golden. Turn the heat to low, then add onion and garlic and stir for 5 minutes or until the onion is soft. Stir in the sage, then remove from the heat and allow to cool for 15 minutes.

Combine the cooled onion mixture in a large bowl with the pine nuts, rind, parsley, breadcrumbs and eggs. Season with sea salt and freshly ground black pepper, then use your hands or a wooden spoon to mix well.

# Adelaide Airport planning for future growth

Adelaide Airport's landscape has changed dramatically over the past decade, and not just as a result of the new domestic and international terminal, T1.

It may have taken close to 50 years to move from the airport's temporary 'tin shed' terminal to a new facility, but the pace of on-airport development has since picked up considerably.

Adelaide Airport Ltd (AAL) Managing Director, Phil Baker, said very strong passenger growth in recent years meant the company was already embarking on significant infrastructure projects to keep up with customer demand.

"When the new terminal was completed in 2005, we set ourselves ambitious passenger forecasts looking ahead to 2015. We reached those targets in less than half that time, so we've needed to revise our timelines for further infrastructure plans," Mr Baker said.

"Construction of a new multi-level car park, pedestrian plaza and associated road network is already well under way. The \$100 million

project will more than double the size of the existing short-term car park, with five levels providing short-term parking for 2,000 public and car rental vehicles.

"We also have plans in place to expand the Terminal 1 building to cater for the growth in regional, domestic and international traffic.

"As part of this plan, the old international terminal will be demolished, and that space used for additional regional aircraft parking.

"Regional services make up a significant part of our business, and passenger numbers increased by more than 11 per cent in 2010/11."

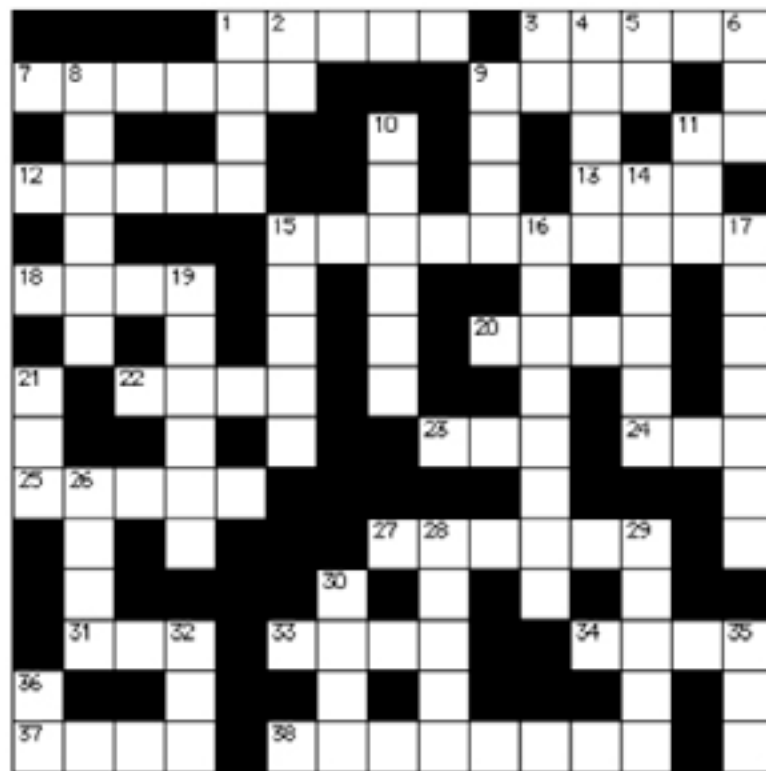
Web: [aal.com.au](http://aal.com.au)



# Sharp Minds

Sharpen your brain with these tricky little quizzes!

## CROSSWORD



### CHRISTMAS SONGS Sing in the Season

Note: Words in *italics> are not song related.*

#### ACROSS

- 1 Heavenly messenger
- 3 Love
- 7 ..... Ride
- 9 Santa Claus is Coming to ....
- 12 Emma's partner or a horse
- 13 *jk...op*
- 15 Winter .....
- 18 Bass or treble
- 20 Modulate vocalization to create sounds distinct from speech
- 22 The First ....
- 23 "Emmanuel, ... with Us"
- 24 A pirate's drink
- 25 ..... Christmas
- 27 ..... We Have Heard on High
- 31 Opposite of me
- 33 The Christmas .... (Chestnuts)
- 34 Christmas celebrates one
- 37 I'll Be ... for Christmas
- 38 O' Come All Ye .....

#### DOWN

- 1 Cheese and wine are usually this
- 3 *.ei.uy*
- 4 To live in a particular place
- 5 *not not not off*
- 6 One thing to do on Christmas day
- 8 ..... Town of Bethlehem
- 9 It's the Most Wonderful .... of the Year
- 10 ..... Bells
- 11 Hotel best known for lack of room
- 14 Away in a .....
- 15 Joy to the .....
- 16 Rudolph the Red Nose .....
- 17 Little ..... Boy
- 19 ..... the Snowman
- 21 Sea... or milk ...
- 26 "Oh, .... Night"
- 28 Silent .....
- 29 Grandma's wrap
- 30 Hawkeye State
- 32 Purpose
- 35 You bet
- 36 Part of Santa's phrase backwards

## WORD FIND

### TIME



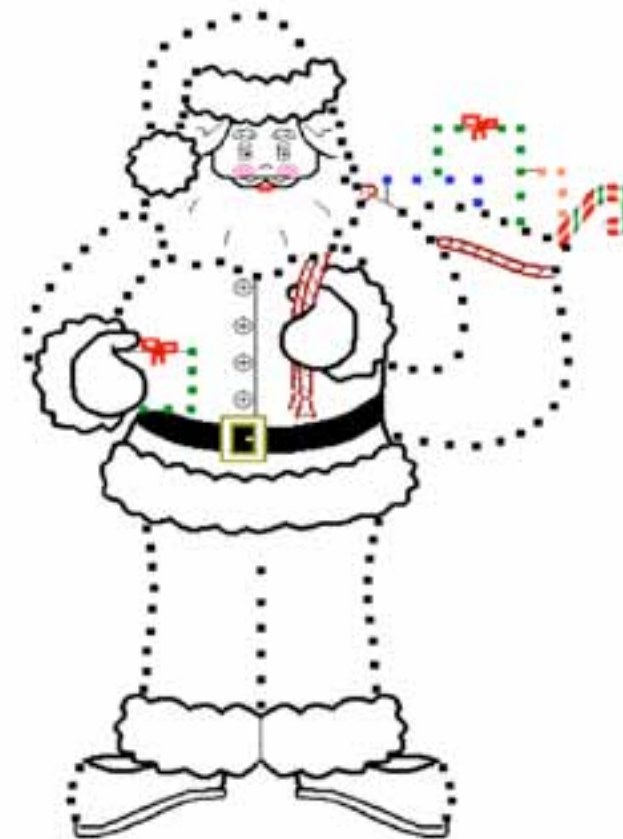
- |                 |           |           |
|-----------------|-----------|-----------|
| AGE             | EVENING   | SECOND    |
| AM              | FALL      | SIDEREAL  |
| ANALOG          | HIATUS    | SOLAR     |
| ATOMIC          | HOUR      | SPRING    |
| BATTERY         | INSTANT   | SUMMER    |
| CALENDAR        | MILLENIUM | SUNDIAL   |
| CENTURY         | MINUTE    | THEN      |
| CLOCK           | MONTH     | TODAY     |
| DATE            | MORNING   | TOMORROW  |
| DAY             | MOVEMENT  | WEEK      |
| DAYLIGHT SAVING | NIGHT     | WIND      |
| DECADE          | NOW       | WINTER    |
| DIGITAL         | PENDULUM  | YEAR      |
| EON             | PERIOD    | YESTERDAY |
| EPOCH           | PM        |           |
| ERA             | SEASON    |           |

## SUDOKU

		7			6	1		
				1	2			8
	4							9
						8		
	8	5						7
9	6	4		2				
				7	1			3
	7				8			5
		1		5				6

# Sharp Kids

## CONNECT THE DOTS!



Who wears a red suit and has a fat belly that shakes when he laughs?

## FIND - A - WORD

### A Bug's Life



- |        |          |          |
|--------|----------|----------|
| ATTA   | FRANCIS  | P T FLEA |
| BIRD   | GYPSY    | QUEEN    |
| CIRCUS | HEIMLICH | ROLL     |
| DIM    | HUPPER   | RUSIE    |
| DOT    | MANNY    | SLIM     |
| FLIK   | MOLT     | TUCK     |

## ANSWERS

### SUDOKU

5	2	7	9	8	6	1	3	4
6	3	9	4	1	2	5	7	8
1	4	8	7	3	5	6	2	9
7	1	2	5	4	3	8	9	6
3	8	5	1	6	9	2	4	7
9	6	4	8	2	7	3	5	1
4	5	6	2	7	1	9	8	3
2	7	3	6	9	8	4	1	5
8	9	1	3	5	4	7	6	2

### CROSSWORD



# The Sharp Traveller

Would you like to advertise?

We can provide advertising packages for The Sharp Traveller Magazine and Sharp Airlines Website. Which incorporate both advertising and editorial features.

1300 30 48 03

Email: [marketing@sharppairlines.com.au](mailto:marketing@sharppairlines.com.au)



# Melbourne Flight Schedules

From 25<sup>th</sup> December 2011 to 30<sup>th</sup> June 2012

→ Melbourne (Essendon) to Hamilton					
Essendon to Hamilton	Departure time	Arrival Time	Flight No.	Frequency	No. Stops
	0820	0910	SHARP822	M T W T F . .	NON STOP
	1120	1210	SHARP834	. . . . . Sa .	NON STOP
	1445	1625	SHARP872/827	. . W . . . .	1 STOP POD
	1650	1740	SHARP842	. . . . . Su	NON STOP
	1755	1845	SHARP828	M . W . F . .	NON STOP
	1910	2000	SHARP828	. T . T . . .	NON STOP
Hamilton to Essendon	Departure time	Arrival Time	Flight No.	Frequency	No. Stops
	0705	0750	SHARP821	M T W T F . .	NON STOP
	0925	1100	SHARP822/871	. . W . . . .	1 STOP POD
	1005	1050	SHARP833	. . . . . Sa .	NON STOP
	1535	1620	SHARP841	. . . . . Su	NON STOP
	1640	1725	SHARP827	M . W . F . .	NON STOP
	1755	1840	SHARP827	. T . T . . .	NON STOP

→ Melbourne (Essendon) to Portland					
Melbourne (Essendon) to Portland	Departure time	Arrival Time	Flight No.	Frequency	No. Stops
	0820	0945	SHARP822	M T W T F . .	1 STOP HML
	1120	1245	SHARP834	. . . . . Sa .	1 STOP HML
	1445	1545	SHARP872	. . W . . . .	NON STOP
	1650	1815	SHARP842	. . . . . Su	1 STOP HML
	1755	1920	SHARP828	M . W . F . .	1 STOP HML
	1910	2035	SHARP828	. T . T . . .	1 STOP HML
Portland to Melbourne (Essendon)	Departure time	Arrival Time	Flight No.	Frequency	No. Stops
	0630	0750	SHARP821	M T W T F . .	1 STOP HML
	0930	1050	SHARP833	. . . . . Sa .	1 STOP HML
	1005	1100	SHARP871	. . W . . . .	NON STOP
	1500	1620	SHARP841	. . . . . Su	1 STOP HML
	1605	1725	SHARP827	M . W . F . .	1 STOP HML
	1720	1840	SHARP827	. T . T . . .	1 STOP HML

# Geelong (Avalon) Flight Schedules

From 8<sup>th</sup> March to 24<sup>th</sup> December 2011

→ Avalon to Portland					
Avalon to Portland	Departure time	Arrival Time	Flight No.	Frequency	No. Stops
	0715	0800	SHARP824	. T . . F . .	NON-STOP
	1630	1715	SHARP832	. T . . F . .	NON-STOP
Portland to Avalon	Departure time	Arrival Time	Flight No.	Frequency	No. Stops
	0815	0900	SHARP823	. T . . F . .	NON-STOP
	1730	1815	SHARP831	. T . . F . .	NON-STOP

# Adelaide Flight Schedules

From 11<sup>th</sup> October 2011 to 30<sup>th</sup> June

→ Adelaide to Port Augusta					
Adelaide to Port Augusta	Departure time	Arrival Time	Flight No.	Frequency	No. Stops
	0645	0735	SHARP861	M T W T F	NON-STOP
	1315	1405	SHARP866	. . . T . . .	NON-STOP
	1500	1550	SHARP877	. . . . . Su	NON-STOP
	1715	1805	SHARP867	M T W . F	NON-STOP
Port Augusta to Adelaide	Departure time	Arrival Time	Flight No.	Frequency	No. Stops
	0750	0840	SHARP862	M T W T F	NON-STOP
	1605	1655	SHARP878	. . . . . Su	NON-STOP
	1720	1805	SHARP865	. . . T . . .	NON-STOP
	1820	1910	SHARP868	M T W . F	NON-STOP

→ Adelaide to Portland (+ = Eastern Standard Time)					
Adelaide to Portland	Departure time	Arrival Time	Flight No.	Frequency	No. Stops
	0910	1125+	SHARP883	M . . . . .	1 STOP HML
	1320	1535	SHARP883	. . W . F . .	1 STOP HML
Portland to Adelaide	Departure time	Arrival Time	Flight No.	Frequency	No. Stops
	1155+	1235	SHARP882	M . . . . .	NON-STOP
	1605+	1645	SHARP882	. . W . F . .	NON-STOP

→ Adelaide to Hamilton (+ = Eastern Standard Time)					
Adelaide to Hamilton	Departure time	Arrival Time	Flight No.	Frequency	No. Stops
	0910	1045+	SHARP883	M . . . . .	NON-STOP
	1320	1455+	SHARP883	. . W . F . .	NON-STOP
Hamilton to Adelaide	Departure time	Arrival Time	Flight No.	Frequency	No. Stops
	1105+	1235	SHARP882	M . . . . .	1 STOP POD
	1515+	1645	SHARP882	. . W . F . .	1 STOP POD

# Flinders Island Flight Schedules

From 17<sup>th</sup> December 2011 to 8<sup>th</sup> February 2012

→ Flinders - Launceston					
Flinders Island - Launceston	Departure time	Arrival Time	Flight No.	Frequency	No. Stops
	0855	0930	SHARP802	M T W T F S .	NON-STOP
	1455	1530	SHARP806	M . W T F . .	NON-STOP
	1655	1730	SHARP808	M T W T F . .	NON-STOP
	1655	1730	SHARP814	. . . . . Su	NON-STOP
Launceston to Flinders Island	Departure time	Arrival Time	Flight No.	Frequency	No. Stops
	0800	0835	SHARP801	M T W T F S .	NON-STOP
	1000	1035	SHARP803	M . W T F . .	NON-STOP
	1600	1635	SHARP811	. . . . . Su	NON-STOP
	1600	1635	SHARP807	M T W T F . .	NON-STOP

→ Flinders - Melbourne (Essendon)					
Flinders Island - Essendon	Departure time	Arrival Time	Flight No.	Frequency	No. Stops
	1055	1200	SHARP804	M . W T F . .	NON-STOP
	1055	1200	SHARP816	. . . . . Sa .	NON-STOP
	1255	1400	SHARP816	. T . . . . .	NON-STOP
	1555	1700	SHARP812	. . . . . Su	NON-STOP
Essendon to Flinders Island	Departure time	Arrival Time	Flight No.	Frequency	No. Stops
	0930	1035	SHARP915	. . . . . Sa .	NON-STOP
	1130	1235	SHARP815	. T . . . . .	NON-STOP
	1330	1435	SHARP805	M . W T F . .	NON-STOP
	1430	1535	SHARP813	. . . . . Su	NON-STOP

# Where we fly.



**Book your flight today!**

1300 55 66 94 | [sharpairlines.com.au](http://sharpairlines.com.au)



### Sharp Airlines Office Hours

Sharp Airlines have new office hours

Monday to Friday - 7am to 7pm EST

Saturday - 9am to 12pm EST

Sunday - 1pm to 6pm EST

Public Holidays - 10am to 5pm EST

CLOSED - Good Friday and Christmas Day

Please note these schedules are subject to change without notice please visit [sharpairlines.com.au](http://sharpairlines.com.au) for the latest information.

Please refer to [sharpairlines.com.au](http://sharpairlines.com.au) for flight availability on public holidays\*

**Phone: 1300 55 66 94**



# Fly into Summer

We fly from **Flinders Is, Launceston, Melbourne, Avalon, Hamilton, Portland, Port Augusta & Adelaide**

Fly for less than

**\$118\***



\*Conditions Apply. One way only. Seats are limited and may not be available on all flights or peak days. Reservations can only be made on-line at - [www.sharpairlines.com.au](http://www.sharpairlines.com.au). Must Travel between 23 December 2011 to 5 February 2012. Fares are non refundable and will be forfeited if you do not fly. Fares are non-refundable and will be forfeited if you do not fly. No changes can be made to this booking, fares are non-transferable and no name changes are permitted. Credit cards bookings only. Amex surcharge of 3.5% applies.

[www.sharpairlines.com.au](http://www.sharpairlines.com.au)

VisitSouthernGrampians.com.au



## NOVEMBER

- 12th Betfair Dunkeld Races
- 18th Ignite the Spirit of Christmas Lunch
- 18th-19th Three French Hens Market
- 26th Tarrington Laternenfest – German festival of lanterns

## DECEMBER

- 3rd Christmas Expo & Street Parade, Hamilton
- 11th Show us your Toys Street Parade
- 26th Penshurst Boxing Day Races



For your copy of the calendar or to find out about any of these exciting events please contact the Hamilton & Grampians Visitor Information Centre on 1800 807 056 or log onto VisitSouthernGrampians.com.au

