

# sharp

TRAVELLER

ACTIVITIES / DESTINATIONS / EVENTS

AUSTRALIA'S WORST CIVIL  
MARITIME DISASTER

MEET LOCAL MAKERS

BIRDS OF KING ISLAND

TAKE ME  
WITH YOU.

EDITION\_37



# WOMBAT LODGE

A cosy new farm-stay located at the foot of Mount Killiecrankie, Flinders Island.

ON  
ISLAND  
TIME.

[onislandtime.com.au](http://onislandtime.com.au)



## RESERVATIONS & ENQUIRIES

**CALL 1300 55 66 94**

[sharpairlines.com.au](http://sharpairlines.com.au)

## HEAD OFFICE

44 Gray Street  
Hamilton Victoria 3300  
T: 1300 55 66 94  
E: [reservations@sharpairlines.com.au](mailto:reservations@sharpairlines.com.au)

## LIKE TO ADVERTISE?

Editorial & Advertising  
Contact Heidi Jarvis  
T: 0438 778 161  
E: [heidi@organisedsuccess.com](mailto:heidi@organisedsuccess.com)

## WELCOME BACK!

I am very pleased to welcome you back on board!

During the past 12 months we have had our challenges and with a new year comes new hope.

We look forward to continuing to deliver crucial tourism and business opportunities to the Bass Strait Island communities.

Recently we have been able to support the Tasmania Government's aim of encouraging intrastate visitation in the wake of COVID-19 border restrictions.

We have been able to offer return flight services between Hobart and King Island, and Hobart and Flinders Island, which are currently available until the end of May.

Since we commenced the Hobart services, Sharp Airlines has facilitated 30 return services to each Island, which has a big win for Tasmanians.

In response to COVID-19, Sharp Airlines is actively monitoring government and agency recommendations and we have developed a COVID Control Framework which has been implemented across our business and network. This has been established using industry standards.

In line with this, airlines and airports have worked together on a set of protocols to minimise the risks of COVID-19 at each stage of your journey, the next time you fly. We want you to travel with confidence, and we all have a role to play in that.

Please ensure when travelling you are aware of any government requirements that apply at your destination, including wearing face masks and coverings.

Please visit the government websites to obtain up to date information on the relevant border controls and COVID requirements. Take care and stay safe.

**Malcolm Sharp**  
MANAGING DIRECTOR

## INTHISEDITION

- 4 AUSTRALIA'S WORST CIVIL MARITIME DISASTER
- 9 ISLAND JEWEL
- 10 TROUSERS POINT, FLINDERS ISLAND
- 15 THE HEALING DREAMS VALLEY, FLINDERS ISLAND
- 16 MEET THE LOCAL
- 18 BUY LOCAL AND SUPPORT VICTORIANS

- 21 7 FLINDERS ISLAND EXPERIENCES TO WRITE HOME ABOUT
- 25 SIX NIGHTS OF BLISS WITH STILLWATER SEVEN & KITTAWA LODGE
- 31 TASMANIA MAKERS BURNIE
- 32 CREATIVE PAPER TASMANIA
- 35 KING ISLAND MUSIC FESTIVAL 2022
- 37 WINGS ON KING
- 43 STAY LOCAL. EAT LOCAL. FLINDERS ISLAND
- 45 MOTHER'S DAY GIFTS
- 48 URBAN ABORIGINAL EXPERIENCES



**sawyers bay shacks**

Flinders Island, Tasmania

Enquiries: 0411 255 179

Located on the waterfront on Flinders Island are Sawyers Bay Shacks. Stylish and architect designed, these shacks front a beach recently nominated by The Age as Australia's top secret beach.



[sawyersbayshacks.com.au](http://sawyersbayshacks.com.au)

# AUSTRALIA'S WORST CIVIL MARITIME DISASTER

The Catarqui (pronounced kat-ara-key) was a British barque which sank off the south-west coast of King Island on 4 August 1845. The shipwreck was Australia's worst civil maritime disaster, claiming the lives of 400 people.

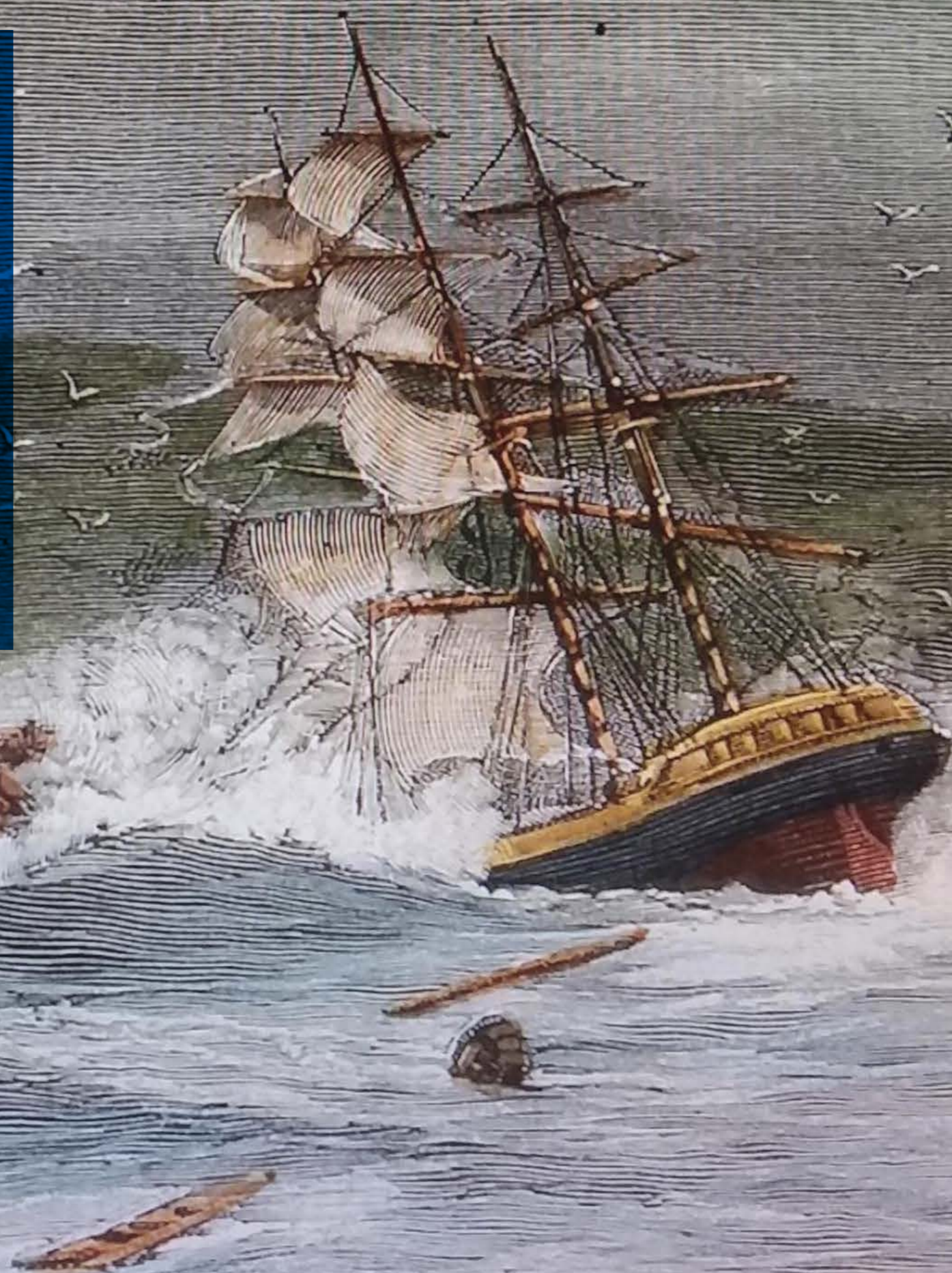


IMAGE CREDIT : Dietmar Kahles



Built in Quebec in 1840, the three-mast, 802-ton timber ship plied the Atlantic trading between Canada and England in the first few years of its life. Taken over by its new owners, the vessel was refitted in 1844 to carry human cargo consisting of emigrants, on a free emigration scheme to populate the fast growing infant colony of Victoria. The shortage of necessary skilled tradesmen, and labourers with agricultural experience at the time forced the home government in London to fill the deficiency by offering free passage, therefore encouraging any man or woman to live and work in the antipodes. Meanwhile, following the aftermath of the industrial revolution, the growing crisis of unemployed labourers, became a major headache for local and national administrations in Britain. To reduce unemployment and family poverty, the emigration scheme was offered to anyone with families interested in moving to the far-flung reaches of Australia.

The Cataraqi set sail from Liverpool for Port Phillip (Melbourne) on 20 April 1845, carrying 365 emigrants, and crew. Most of those who embarked with their families were poor and were selected by parish committees for the journey. In reality, by sending the poorest to Australia, it was the easiest way in combating the poverty crises. Hoping for a new and better life, the children of those travelling, which made up 60% of those onboard the doomed ship were aged between 3 weeks and fourteen years-of-age.

After an uneventful voyage, crossing half the world, the Cataraqi entered a deep southern hemisphere winter. Overcast, constant squalls, endless heavy weather, and mountainous seas prevented Captain Finlay from making accurate navigational observation in the final two weeks of the voyage.

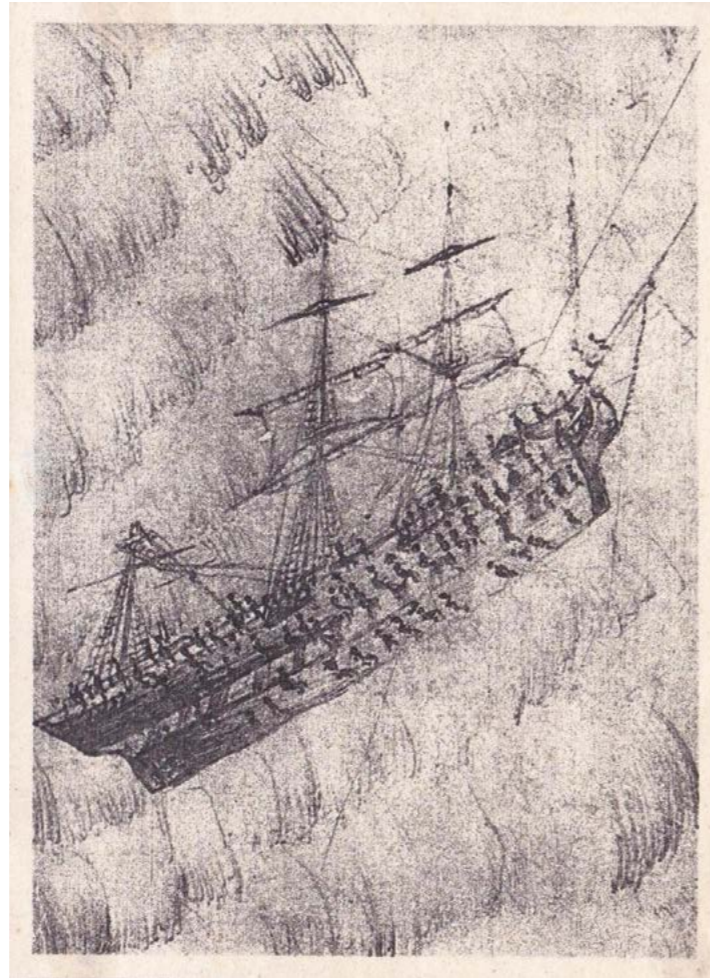
By the beginning of August 1845, and with the vessel approaching the western edge of the Bass Strait, the Cataraqi encountered one of the severest storms ever recorded at the time. Contemporary reports in Melbourne described the storm as ‘hurricane-like’.

Through ‘dead reckoning’, Finlay believed his ship to be just over 100 miles from Melbourne in the very early hours of 4 August. Hope turned to horror, when at 4.30 a.m. that day the Cataraqi slammed into reefs off the southwest coast of King Island. Within twenty-four hours 400 people had perished, just a few meters

from shore and just a day or two from reaching their final destination. Only nine would 'live to tell the tale' of carnage and horror.

175 years later this historical national tragedy was commemorated on King Island in early August 2020. A large bronze plaque listing the names and ages of all 409 souls on the Cataraqui was unveiled at the wreck site beside the five mass graves. It was unveiled by the great granddaughter of David Howie, a hunter on King Island, who had the grim task of burying the dead in those five graves.

A ship's bell was also placed at the site to ring in perpetuity. To mark 175 years since the tragedy, a new room dedicated to everything Cataraqui has been opened at the King Island Museum. Exhibits include general artefacts, a cannon, a parliamentary report on the disaster, dating from 1846, and two paintings of the Cataraqui were commissioned from leading Australian watercolourist Jason Roberts. A service at the site was echoed with a similar service held in the village of Tackley in Oxfordshire, England. Locals there came together to remember 10% of Tackley's population who sailed for a better life on the doomed ship. Sadly for Tackley, none of the 10% survived.



For more information visit:

#### Catacaqui

<https://www.facebook.com/catacaqui175>

#### KI Historical Society

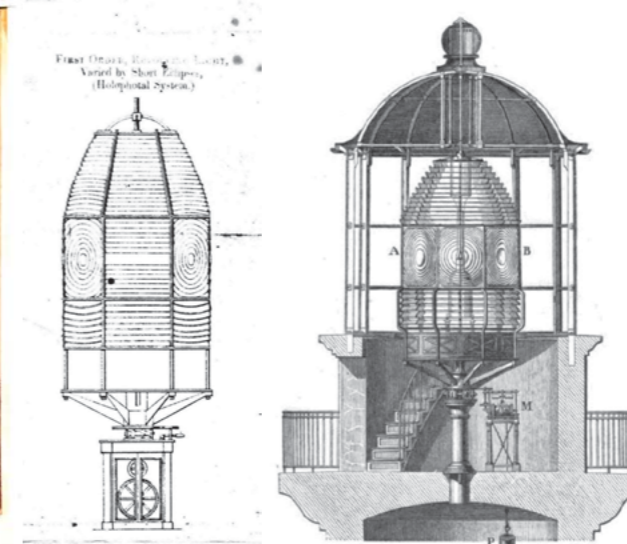
<https://www.facebook.com/groups/3642522515768639>



Commemoration Plaque - Ship's Bell



Currie Harbor Lighthouse



# ISLAND JEWEL

As many of us know, the original Cape Wickham Lens, housed in the Lens Room at the museum (actually the former storage and work-shed of the Currie Lighthouse), is one of the museum's most significant exhibits. Re-erected after having been returned to the island from WA some time ago, the 1860 lens is complemented with portraits of its former lighthouse superintendents adorning the room. However, few are aware of the existence of the original Currie Lens which survives intact at the other end of the same building. Recently, the Historical Society reached the decision to reassemble the 144-year-old Currie lens

(1877), much the same way as the Cape Wickham Lens (1860). The newest exhibit space will not only feature historical documents and photographs about Currie Lighthouse, but will also reveal the full maritime history of Currie Harbour, the sailing vessels who used it, the steamers who operated regular trading services, and a number of maritime objects, previously unseen by the general public. The Historical Society hopes to see its new room open to the public by 2022. Certainly, exciting times ahead for the King Island museum, and its many wonderful members who volunteer so much of their time to keep this Island jewel flourishing.

## ROCKJAW TOURS

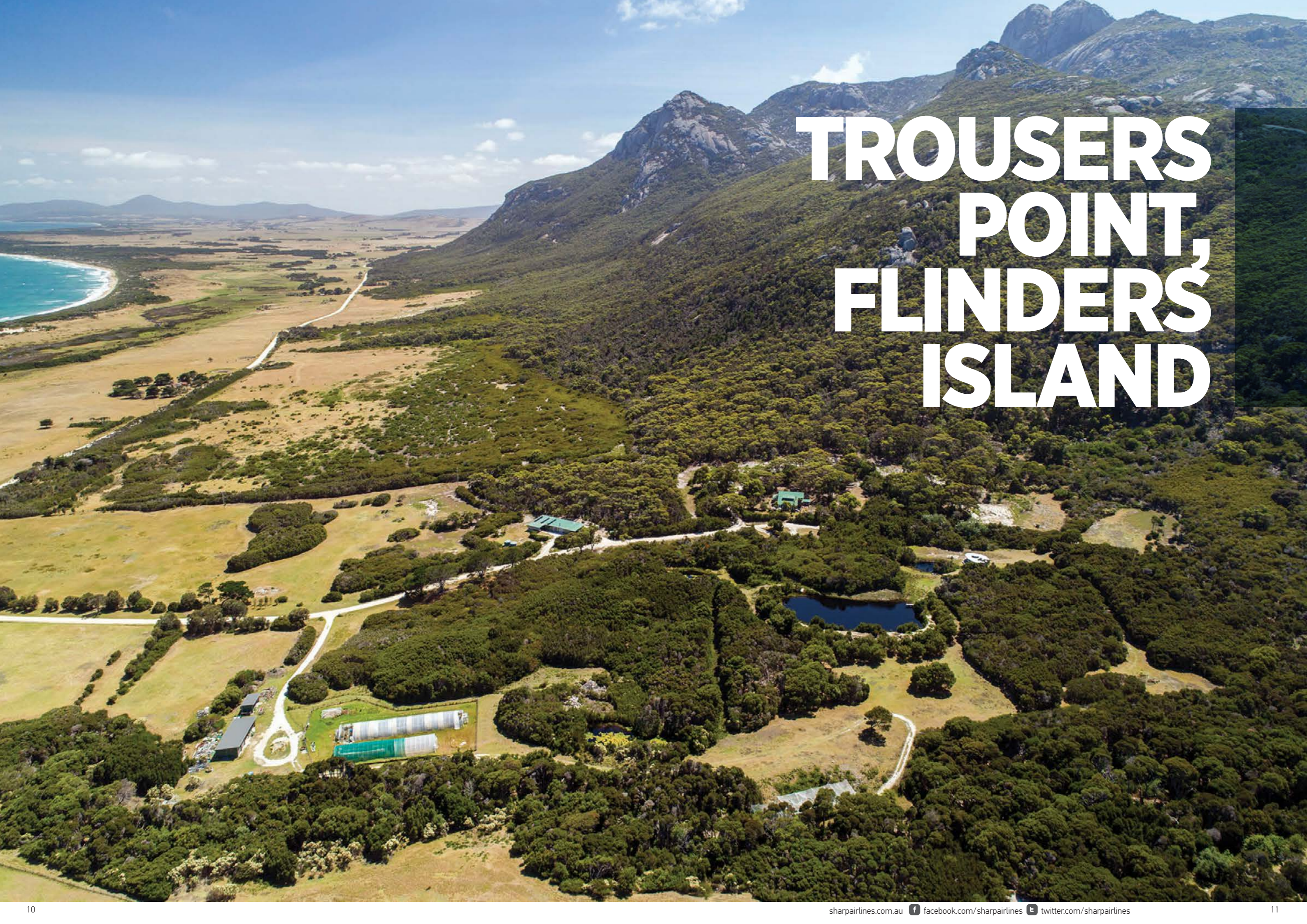
FLINDERS ISLAND HUNTING + FISHING TOURS

Chris (Rockjaw) Rhodes

M 0427 596 506

email [chris\\_rhodes@bigpond.com](mailto:chris_rhodes@bigpond.com) web [www.rockjawtours.com.au](http://www.rockjawtours.com.au)





# TROUSERS POINT, FLINDERS ISLAND



Located at the foot of Mt Strzelecki on 25ha of gentle sloping land, bordering the National Park. Strzelecki Mountain rises directly behind the property, to a height of 756m. It is the jewel of the National Park totaling 40,000 acres, surrounding the Ta Meri property.

Located 15 minutes from the Flinders Island Airport and 15 minutes from the town of Whitemark.

Knight Frank is pleased to offer for sale 811 Trousers Point Road, Flinders Island on behalf of David and Lila Sophia Tresemer.

For more information contact:

**Rodney Rawlings**

M: +61 419 323 626

E: [rodney.rawlings@au.knightfrank.com](mailto:rodney.rawlings@au.knightfrank.com)

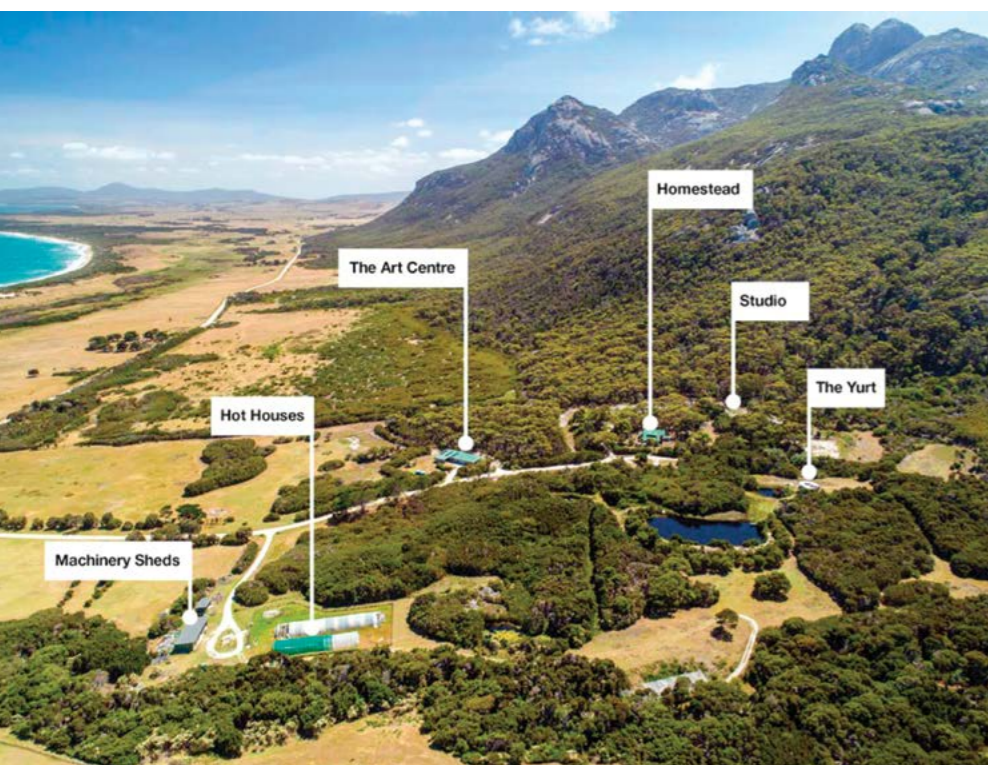
Thousands of years ago, Flinders Island was part of the landbridge between Tasmania and mainland Australia. Matthew Flinders mapped the islands in the Furneaux Group in 1799. He named Mount Chappell Island—the pyramidal shape to the West into which we see the sun set in the summer—after his wife, Anne Chappell. At that time, no one lived on Flinders Island. In 1830 the remnants of the aboriginal population of Tasmania were brought to a series of settlements in the Furneaux Group (mostly at Wybalenna), that experiment ending in 1847. At the beginning of the 20th century, the Solider Settlement schemes brought new people to the Island, some after WWI and many

after WWII. The National Park was established in 1967, and named after Count Paul Edmund Strzelecki, who climbed the peak in 1842, when very few people lived here.

The mountain was an object of awe and admiration from northeastern Tasmania where it appears as a tall purple silhouette. One story is that the mountain, as seen from the big island of Tasmania, resembled a 'jumping dolphin'

The Dairy on this property was originally a dairy for a small farm and settlement of several houses on this side of the road and immediately across Trousers Point





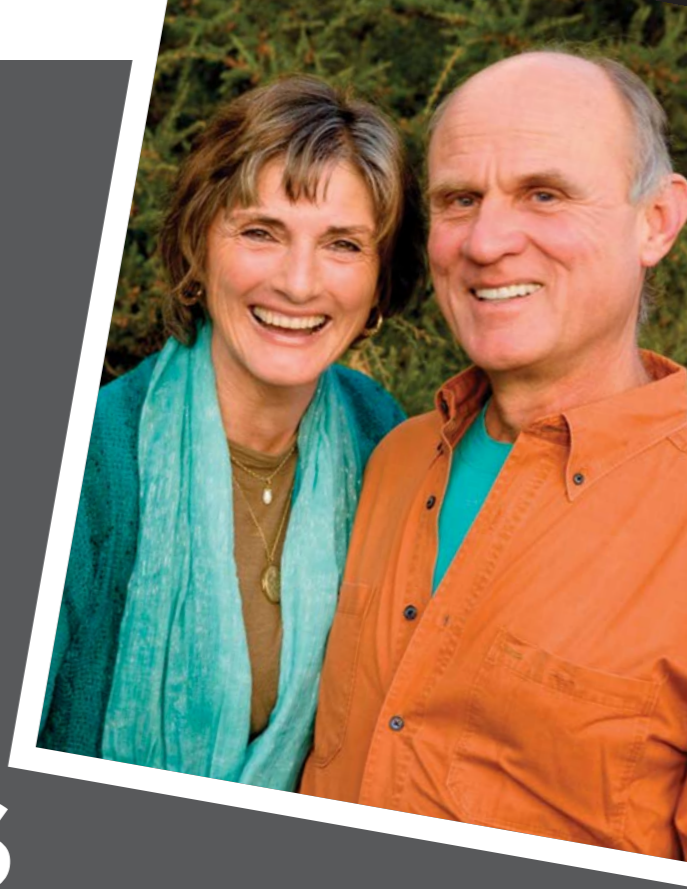
Road, in an area called Locotta. Only the Dairy remains from that era. The valley was used for cattle grazing until Robert and Debra Lawlor purchased the property in the early 1970s. They first camped on the property at what we now call Founders' Circle on the Enchanted Way, near the stream that flows all year round, sourced from the slopes and valleys of Mt. Strzelecki. They laid out five ponds and built the original structures of Ta Meri and, across the stream to the South, the original Neagarra (now Mountain Seas Lodge). The ponds have since been redug and expanded; the houses remodeled; new buildings added.

Robert wrote several books on this property, including *Earth Honouring* and *Voices of the First Day: Awakening in the Aboriginal Dreamtime*. His second wife, Joanna, wrote *Wise Women of the Dreamtime*.

David and Lila Sophia Tresemer first visited in 1997, and fell in love with the mountain and the valley. They began Healing Dreams Retreat in 2004, which was well received by the tourist industry. The main accommodation became Mountain Seas Lodge which is currently under new ownership in the last 18 months, as well as new management in recent weeks. Healing Dreams Art and Wilderness Retreat works cooperatively with Mountain Seas Lodge to provide guests with a high end experience of "elegance at the edge of the wild. Healing Dreams has a full scale Art Centre for painting and ceramics, as well as two lovely self-contained units, the Studio and the Yurt. Organic certification, art activity, and happy visitors have all been elements of the Healing Dream experience.

# THE HEALING DREAMS VALLEY, FLINDERS ISLAND

By David Tresemer and Lila Sophia Tresemer



When we first drove from the main road into what we later called the Healing Dreams valley, both of us felt a shock-wave of the power of this fertile valley between majestic mountain and refreshing sea. We were visiting the previous owner, Robert Lawlor, an author who specialized in ancient Egypt, thus he had named the property "Ta Meri," which in Egyptian means "Earth beloved of Heaven." We experienced that powerfully on that day in 1997, and ever since.

Being near the meteorological station that measures the cleanest air and water on the planet meant a lot, and one can feel the purity of the island and this valley. Getting off the plane, the air is velvety thick, with subtle notes of the perfumes of the trees and flowers of the island.

We bought the Ta Meri property, and the one next door, named "Neagarra," meaning in one of the aboriginal dialects, "Place of Dreaming." We decided that this kind

of powerful pure energy had to be shared, so we built accommodations. We quickly found that people indeed dreamt more deeply, so we named the valley Healing Dreams. People have found guidance in that valley for the rest of their lives. We built an Art Centre so that people could express what they experienced, and for years sponsored an Artist-in-Residence program.

The property next door in this valley, now "Mountain Seas," enjoys the rare proximity of tall mountain and the two long white sand beaches curving round from the rocks at Trousers Point. That property is recently under new management.

The water coming down the side of the mountain ("Fotheringate Creek") makes the fertile soils bountiful with trees, herbs, and vegetables, under the magic fingers of our property manager, Helen Cassidy.

There are many secrets in that valley that can only be discovered by standing there.



# MEET THE LOCALS

**CLAIRE CASTLE AND AMANDA BLYTH,**  
CO-OWNERS OF FLINDERS ISLAND  
MOUNTAIN BIKING

Launching Mountain Biking Flinders Island was a no-brainer for friends and now business partners Claire Castle and Amanda Blyth.

A chat over a cup of tea one rainy day resulted in a business idea they were both determined to make work.

"It really was that simple," says Claire.

Claire and Amanda are from two of the oldest families on the island and have always loved spending time in the great outdoors.

"Claire is fourth generation and I am fifth generation islanders," says Amanda.

The new business venture ticked a lot of boxes for the dynamic duo, from where they are currently in their life, to their shared enthusiasm to show off their beloved island paradise to visitors.

"We are two young mums who love our children, our island and mountain biking," says Amanda.

The only hitch to getting their plan off the ground was securing funding, which is when they turned to the local community for help. The response was overwhelming.

"Initially we were just after \$600 to buy our first bike, and then it snowballed and we gave people an opportunity to enter into a sponsorship agreement where they buy a bike and we put their business or name on it," says Claire.

There's even a bike sponsored by Derek the famous Flinders Island wombat. Every time that bike is hired \$5 is donated to the Wombat Fund.

"It's a great conversation starter, because our clients ask about the story when they see the different sponsor's names," says Claire.

Not all locals want to be recognised, some are more understated and prefer to remain anonymous.

"We wouldn't have this business if it wasn't for the community," says Claire.

"We are very lucky and extremely grateful."

Claire and Amanda will be part of the Food & Cray Festival for the first time providing guided tours around the island.



For more information:  
[mountainbikingflindersisland.com.au](http://mountainbikingflindersisland.com.au)



## Mountain Biking Flinders Island

*Come and experience Flinders by bike with us.*

*We offer a range of tours to cater for all abilities. From leisurely roads to rugged dirt tracks. Bike hire options available.*

[www.mountainbikingflindersisland.com](http://www.mountainbikingflindersisland.com)

Claire: 0428 844 560 Amanda: 0498 857 932



# BUY LOCAL AND SUPPORT VICTORIANS

Pennicott Wilderness Journeys

There has never been a more important time for Victorians to Click for Vic with a range of new digital marketplaces launched to provide local small businesses with an outlet to reach those in lockdown and beyond.

From regional Victoria's world class producers to the makers nestled in Melbourne's laneways and diverse creators of the city's eclectic neighbourhoods, the best of the state is only a click away.

Window shopping may be on hold for now but Victoria's wineries, breweries, farms, fashion and design stores, gallery shops, bookstores and more are open for business with a range of home delivery options.

Food and drink is an important part of Victoria's DNA and locals can keep spirits high with new online platforms such as online farmers market Victoria Country Market, home food service Providoor and digital retailer Co-Lab Pantry.

Victoria's famed farmers markets have moved online with Victorian Country Market, a digital marketplace which replicates the traditional regional market offering and supports communities impacted by bushfires and challenges of COVID-19. The platform aggregates more than 250 local products, including fresh produce, drinks, arts, crafts and homewares.

Founded by celebrated Melbourne chef and owner of award winning Maha restaurant Shane Delia, Providoor has partnered with the city's best restaurants to offer chef prepared, finish-at-home game changing delivery service.

Newly launched Co-Lab is an online retail hub offering high-end pantry staples, meals, drinks and experiences from Victoria's most-loved restaurants, bars, cafes, brands and producers to customers across Australia.

Head to [visitvictoria.com/clickforvic](https://visitvictoria.com/clickforvic) to start perusing some of Victoria's amazing products.

## GIFT GUIDE

Support Victorian businesses with these local gift ideas available for home delivery.

### FOODIES:

**Native Flavours:** Everyday home cooks can get a taste of the Australian bush with Saltbush Kitchen's Australian Spice Rubs or transform baking and desserts with this sweet Spice Trio from Yarraville's Mabu Mabu.

**Handmade Knives:** A home cook is only as good as their tools so sharpen their skills with a handmade knife from MD Knives, crafted in the Dandenong Ranges from fallen trees, or a custom kitchen knife from Torquay's Metal Monkey Knives.

**Glassware:** Ballarat leather craftsman Wootten has collaborated with Melbourne-based Denver & Likely to create a limited edition Whisky Glass Explorer Pack, which includes a hand-blown Whisky glass and vegan Kangaroo Leather glass holder. Enjoy Victoria's world class wine regions in locally made glassware designed for specific wine styles with Melbourne's Plumm, including a decanter and stemless red wine giftpack.

**Chocolate:** Surprise a sweet tooth with a Melbourne Cocoa classic pack of five chocolate blocks (Mocha, Salted Caramel, 48% Milk, 70% Dark and 35% White), pick and mix handcrafted chocolates for the ultimate custom chocolate box by Great Ocean Road Chocolaterie & Ice Creamery or a handmade dark chocolate hamper with enviro-friendly recycled paper packaging from Monsieur Truffle.

## EXPLORERS:

**Nature by Boat:** Buy now and experience later with a gift voucher from a range of leading Victorian nature experiences. Discover the rugged coastline and wildlife of Wilsons Promontory National Park on board state of the art custom-built amphibious boats with Pennicott Wilderness Journeys or experience a two-hour cruise from Phillip Island with Wildlife Coast Cruises.

**Wildlife Experiences:** Support the conservation and research of Victoria's penguin community by adopting a Little Penguin for a friend, family or loved one with Phillip Island's Penguin Foundation. Sealife Melbourne offer a range of unique experiences, including Shark Dive Xtreme, or wake up to the sounds of animals in the historic elephant exhibit at Zoos Victoria's Roar 'n' Snore Overnight Camp.

**Cliff Picnic:** Not for the faint hearted, treated someone to a breathtaking outdoor dining experience over the edge of Mt Buffalo with Bright Adventure Company's Cliff Picnic on a private ledge while suspended 300m above the valley floor.

**Carry All Weekender:** Pack in style for that road trip to regional Victoria or Melbourne staycation with local travel accessory company July's Carry All Weekender, the perfect spacious and elegant duffle bag.

## HOME:

**Clae Studio:** Melbourne-based artist Britt Neech shifted her focus to using ceramics to create art. Clae Studio uses the endless possibilities of clay to explore qualities such as surface, form and texture to produce ceramic art pieces for the home.

**Mr Kilty Selfwatering Pots:** Brunswick's Mr Kilty has collaborated with Melbourne homewares brand Décor to produce an original range of colourful lightweight selfwatering pots perfect for the home.

**White Speckled Bud Vase:** Add some colour to the home with a contemporary handmade stoneware vase in various sizes from Melbourne ceramics studio Ghost Wares.

**Billabong Picnic Rug:** A multi-purpose waterproof picnic rug for all seasons by Creswick Wool Mill, made with a smooth wool/polyester on the topside and waterproof backing on the other which makes it ideal for all outdoor activities.

## RELAX:

**Earth Clay Collection:** Recreate the famed Peninsula Hot Springs experience at home with a new exclusive Australian Earth Clay Collection, a range of stimulating earth clay blends rich in minerals known for their renowned effects and healing properties.

**Refresh and Renew Giftbox:** Refreshing trio of Ena Hand Wash, award winning Body Scrub and Australian Peppermint Foot Treatment is a complete home spa treatment, that will leave users feeling uplifted, refreshed and completely renewed.

**Cabin Fever Care Kit:** Unwind with the Grampians Goods Go Cabin Fever Care Package which includes a Grapefruit & Geranium Aromatherapy Candle, Grapefruit & Geranium Lather, Hand & Body Wash and a lotion of choice.

**Bath Caddy:** Pour a drink and grab the book for a long soak in the tub with a handmade bath caddy made in Shepparton from Victorian Ash timber which includes a routed slot designed to hold a wine glass for the ultimate relaxing bath.

**Daily Brew Box Tea Hamper:** Indulge in the simple moments with a home brewed cup of tea from Yarra Valley Tea Company. The Daily Brew Box Tea Hamper's selection of certified organic tea covers everyone's daily needs from English Breakfast, Aunt Myrtle [Australian green tea and lemon myrtle], Relax, Lemongrass & Ginger, Digest It, Nod Off Sleep Tea and Premium Yarra Valley Honey Co 250gm.



For more gift ideas, please visit:  
[visitvictoria.com/clickforvic](https://visitvictoria.com/clickforvic)



# 7 FLINDERS ISLAND EXPERIENCES TO WRITE HOME ABOUT

Well before self-isolation became a thing, Flinders Island had the now common place experience covered. One of those unique destinations that captivates all the senses, it is paradise as you did not know it, but is a welcome retreat as we find new ways to explore and connect in the new Covid-world we find ourselves in.

Mother nature was in the kindest of moods when crafting this isle, with rugged landscapes and natural beauty at every turn. The emptiness of the island is one of its greatest appeals, but rest assured your soul

will be left far from 'half-glass' following a visit. If you are longing to feel more human again after a Winter many will be glad to put behind them, head across Bass Strait to grow in more ways than you could ever imagine.

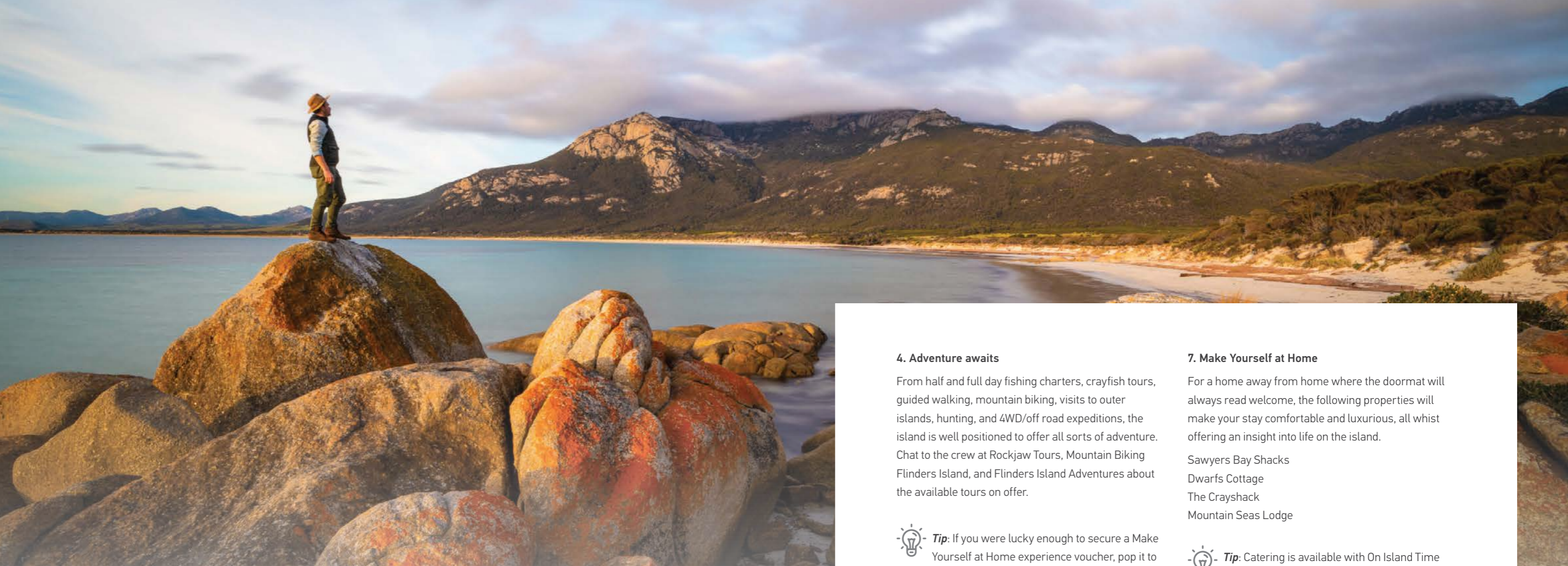
Charming, contagious, and simplistic in the finest way, you will arrive as a Tasmanian and leave as a local, constantly checking your diary for free weekend's as to when you can return.



**Dine in or takeaway.  
Breakfast, Lunch & Dinner**


Serving meals which include local fish & chips, steak, hamburgers.  
Monday to Saturday 7am to 4pm

**34 Edward Street Currie. CALL 03 6462 1459**




### 1. First stop, The Flinders Wharf.

The flight is brief but gawking out the window at the magic below can be a real eye-opener for first timers. Percolate the fact that you have arrived on Flinders with a caffeine hit at The Flinders Wharf. Easily mistaken for a bayside café & restaurant combo you would find in Docklands, Melbourne, this architecturally designed contemporary space has all the wow factor with the lens of local owners.

 **Tip:** Pen your postcard home from the bar stools overlooking Bass Strait and watch the weather roll-in and for a real buzz be sure to gather honey straight from the built-in beehive.


### 2. Up next, Furneaux Distillery

Whilst at the wharf be whisked away by Furneaux Distillery, the on-site producer tucked behind the fitting porthole window. Offering tastings and tours by appointment it is here where you will find locally crafted gin & whisky reflecting the environment of the island itself.

 **Tip:** Take some for the road – duty free rules of general overseas holidays need not apply!


### 3. Peruse some of the local stores

Head to Condimental and have a chat with the owners, renowned fermentation gurus and master makers of sourdough, a range of decadent sauces, as well as a solid suite of gluten free goodies. Wander up the road and you will find yourself at The Purple Swamphen, the hub of all things handmade on the island and the perfect place for island souvenirs. You won't find any 'I've been to Flinders Island' t-shirts here however, more like eco-friendly, linen clad treasures and retro vinyl tunes you can play back home and dream about that time you visited.

 **Tip:** At Condimental be sure to ask about the vegan leather and at The Purple Swamphen keep your eyes peeled for the baby wombats for some serious cuddle-me-cuteness!


### 4. Adventure awaits

From half and full day fishing charters, crayfish tours, guided walking, mountain biking, visits to outer islands, hunting, and 4WD/off road expeditions, the island is well positioned to offer all sorts of adventure. Chat to the crew at Rockjaw Tours, Mountain Biking Flinders Island, and Flinders Island Adventures about the available tours on offer.

 **Tip:** If you were lucky enough to secure a Make Yourself at Home experience voucher, pop it to good use by booking one of the tours.

### 5. Cocoon yourself at every corner

Breathtakingly beautiful scenery lies at every point – be sure to leave no corners unturned by seeing every edge of the island. Get out and hit the road for the day by hiring a vehicle from Flinders Island Car Rentals or Flinders Island Cabin Park. A scenic island flight with Flinders Island Aviation will offer the opportunity to take in a different perspective.

 **Tip:** Make sure Trousers Point, Mount Strzelecki National Park and the North East River are well marked on your map.


### 6. Get barefoot and fancy free

Home to some of the most untouched and pristine beaches in the world, feel the sand beneath your toes and allow the lichen covered rocks to scrub your feet in a way a day spa never could. Emita, Palana, Killiekrankie and Trousers Point are just a few of the coastline gems ready to be discovered.

### 7. Make Yourself at Home

For a home away from home where the doormat will always read welcome, the following properties will make your stay comfortable and luxurious, all whilst offering an insight into life on the island.

Sawyers Bay Shacks  
Dwarfs Cottage  
The Crayshack  
Mountain Seas Lodge

 **Tip:** Catering is available with On Island Time for those staying at Dwarfs Cottage or The Crayshack. For other eats consider The Furneaux Tavern or the Cate Cooks Flinders Island.

### How to get here:

Sharp Airlines offer regular flights departing from both Hobart and Launceston and Flinders Island Aviation offer a charter service to the Bass Strait islands departing to/from Bridport.



 For more information on services and experiences on the island:  
<https://visitflindersisland.com.au/>

Image: **Fotheringate Bay, Flinders Island**

Image credit: **Luke Tscharke**

Source: **[tourismtasmania.com.au](http://tourismtasmania.com.au)**

 **MORE INFORMATION**  
**[flinders.tas.gov.au](http://flinders.tas.gov.au)**  
**[visitflindersisland.com.au](http://visitflindersisland.com.au)**  
**[discovertasmania.com.au](http://discovertasmania.com.au)**



# **SIX NIGHTS OF BLISS**

**WITH STILLWATER SEVEN  
& KITTAWA LODGE**



With a mutual appreciation for providing a truly unique and personalised experience for guests, Co-Owner of Launceston's Stillwater Seven, Chris McNally and Co-Owner of King Island's Kittawa Lodge, Aaron Suine have teamed up to offer the ultimate luxury accommodation package. A 6-night all-inclusive experience, the package has been meticulously curated by Chris and Aaron with maximum relaxation in mind. Guests will be treated to:

## STILLWATER

- Three nights in a Premium King Suite at Stillwater Seven
- A bottle of Premium Vintage Tasmanian Sparkling on arrival
- A la carte breakfast by Chef Craig Will each morning, including a choice of Hartshorn Sheep's Whey Vodka Bloody Mary, or a glass of Tasmanian Sparkling
- One night 3-course dinner at Stillwater Restaurant (menu by Executive Chef Craig Will)
- One night shared dinner at Black Cow Bistro (menu by Executive Chef Craig Will)
- Wine with dinner each evening chosen by award-winning sommelier James Welsh
- A \$100 gift card for tickets, drinks and snacks at the Star Theatre, a stunning Art Deco renovated cinema in Launceston (open Friday – Sunday only)
- 2x 500ml locally-made Lentara Grove bath products to take home

## KITTAWA LODGE

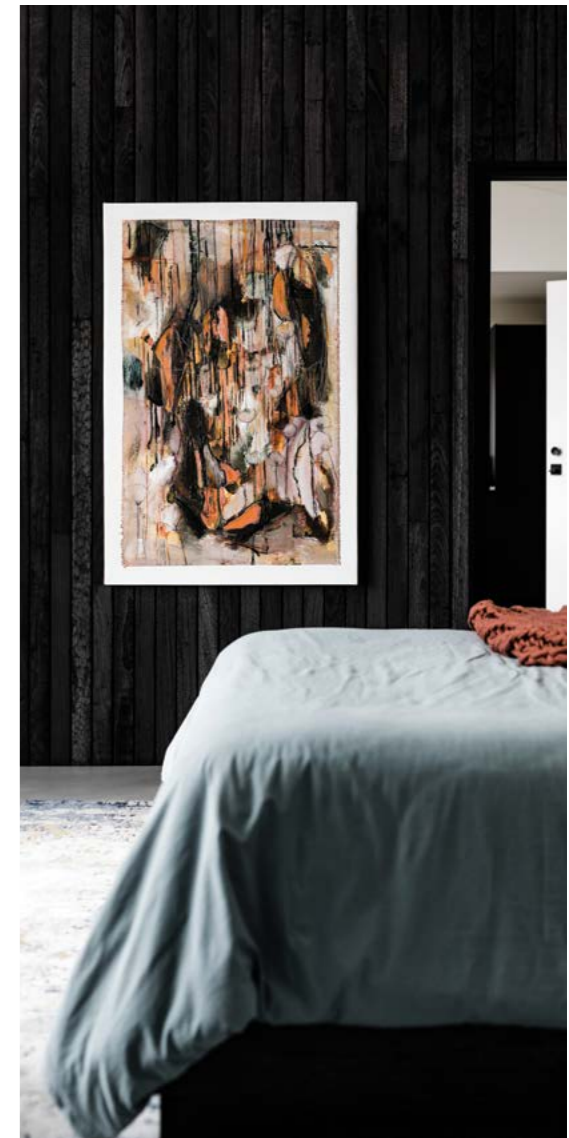
- Three nights at Kittawa Lodge in one of the luxurious one-bedroom lodges
- A bottle of Arras Grand Vintage sparkling wine on arrival
- Gourmet breakfast provisions during your stay
- Light lunch served in your lodge daily during your stay (or packed in a picnic hamper should you wish to explore the island)
- Complimentary snacks during your stay
- Two 3-course dinners prepared by your private cook in your lodge, with a \$250 credit towards the curated in-room bar offering
- One-hour relaxation massage in your lodge, with a crackling fire in the background
- 'Tasmania' scented candle from The Raconteur to take home

**Package Price: \$9,910 for stays between 1 May until the end of October 2021.**

*Flights with Sharp Airlines are included in the package price (between Launceston/King Island or King Island/Melbourne (Essendon Fields) along with airport transfers and car hire on King Island. Standard pricing is for a maximum of two adults. Additional nights at either or both Stillwater Seven and Kittawa Lodge can be arranged and quoted on enquiry.*



Further information and bookings at  
[stillwater.com.au/seven](https://stillwater.com.au/seven) and  
[kittawalodge.com](https://kittawalodge.com)



## Q&A WITH KITTAWA LODGE CO-OWNER, AARON SUINE

### What does hospitality mean to you?

We created Kittawa Lodge with one main ambition in mind: to create a truly memorable experience for our guests. Hospitality means taking the time to understand what each of our guests desire from their stay, as no two guests are the same. It is not the grand gestures, but the small personalised touches throughout their stay that tend to linger long in their memory.

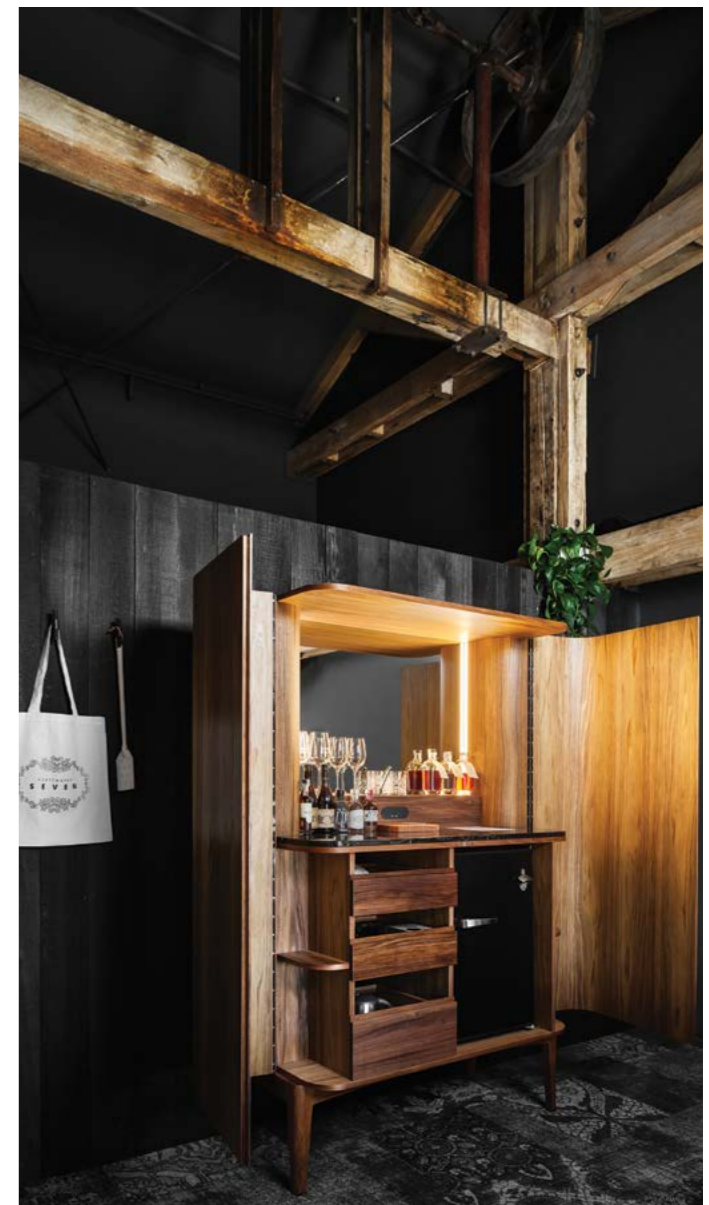
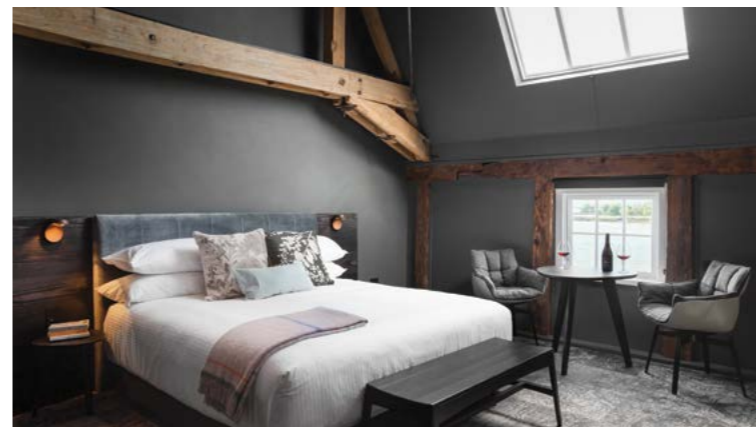
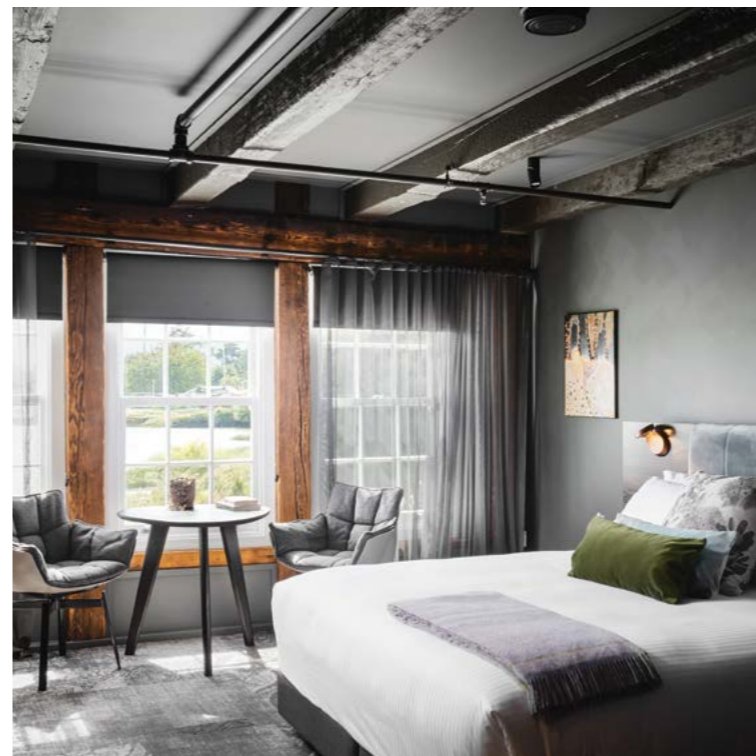
### What do you love most about welcoming people to your part of the world?

We draw a huge amount of satisfaction from watching our guests exhale and relax. Kittawa Lodge and indeed King Island, forces our guests to slow down as we

showcase our unique and untouched part of Tasmania.

### What inspired the Stillwater/Kittawa Lodge collaboration?

Combining a boutique city escape with a remote island getaway, we felt strongly that we would be able to provide our guests with something that was both unique and special. On a personal level, we are both strongly aligned in our service mentality and the way we view hospitality (plus we consider Chris and the team great friends, which is important). We are a natural fit and many guests comment on how seamless the whole experience is across the two properties.



## TOP 5 THINGS TO DO DURING YOUR VISIT TO LAUNCESTON/ KING ISLAND.

1. Enjoy a glass of wine or G&T as you watch the sun setting from our handmade concrete bath, in the comfort of your lodge.
2. Set out on a driving tour of King Island, taking in the unique sights of the Calcified Forest, Seal Rocks and Stokes Point in the south and Cape Wickham, Disappointment Bay (*which is not at all disappointing!*), Penny's Lagoon and Martha Lavinia Beach in the north.
3. Indulge in the world-renowned produce that the island has to offer, whether it be lobster, beef, lamb or cheese.

4. Work on your game at one of our three world-class golf courses (Cape Wickham, Ocean Dunes and the locally-run King Island Golf Club).
5. Just be. Sometimes the best moments are those when you are able to truly sit back and watch the world go by. Whether it be watching a storm brew across the Southern Ocean, or being in awe as the friendly wallabies frolic mere metres from your window.

## Q&A WITH STILLWATER SEVEN CO-OWNER, CHRIS MCNALLY

### What does hospitality mean to you?

Hospitality means welcoming our guests to our hotel and restaurants, making them feel truly special throughout their stay with us and wowing them at every turn. We take pride in knowing what our guests want before they know it themselves.



### What do you love most about welcoming people to your part of the world?

Seeing our guests relax and have time to breathe. I draw a lot of satisfaction from giving people that opportunity.

### What inspired the Stillwater/Kittawa Lodge collaboration?

In talking with Aaron and Nick, it became clear that we have a like-minded ethos in terms of how we look after guests, and the service we want to provide. It seemed a natural fit to put together an all-encompassing experience for our guests so that they don't have to worry about planning their holiday. We take care of everything.

## TOP 5 THINGS TO DO DURING YOUR VISIT TO LAUNCESTON/ KING ISLAND

1. The Cataract Gorge for sure, but there is also the walk up to the old Duck Reach Power Station. It's a big walk but the view from the top is worth it.
2. An afternoon drink and snack at Havilah Wine Bar. Chanel and Ricky have done something special there.
3. A walk through the city to Design Tasmania. They showcase a range of Tasmanian wares there and I especially love the furniture.
4. Another great little bar is Bar TWO. Perfect for a pre-dinner G&T.
5. Valley Coffee is a new cafe in the city that just opened – located in old stables. Pete has set it up perfectly. It's going to be my go-to morning coffee spot on my days off.



# TASMANIA MAKERS BURNIE

Makers' Workshop is a superb cultural hub celebrating Tasmania's makers, innovators and artists. Opened in 2009, this award-winning contemporary building is a "must see" when visiting Burnie. Makers' Workshop offers a range of visitor experiences including; Interactive paper making tours, cheese tasting, encounters with artists, historic displays, an art gallery, gift shop and licenced café specialising in Tasmanian produce and an accredited visitor information centre.

The story of Burnie's industrial heritage and deep connection with paper is told at Makers' Workshop through Australia's largest handmade paper mill; Creative Paper. Visitors are invited to learn about the history of papermaking, watch paper being made, then try it for themselves in a special interactive tour. Paper-making tours depart every 45 minutes. 30 min duration.

The Cheese Shop offers the finest Tasmanian dairy products for tasting and purchase. Manufactured by Lion, at The Heritage in Burnie, this is the largest specialty cheese manufacturing site in the Southern Hemisphere.

Makers' Workshop is well known for its vibrant Makers' Program, a consortium of over 30 local artisans specialising in a variety of art forms. Makers' demonstrate their skills and techniques to visitors, showcasing a superb range of handmade products and artworks at the on-site studios. An extensive gift shop sells a large range of Makers' products; local timber, handmade glass, jewellery and textiles are specialities.

Featuring key objects from Burnie's Regional Museum, historical and interpretive displays present the stories of local industries, people, and families who made things happen in Burnie.

The Makers' Space gallery is one of the most sought after exhibition spaces in Tasmania. Presenting an annual program of quality exhibitions with a distinctly Tasmanian flavour, Makers' Space invites you to experience the work of Tasmania's visual artists, curators, designers and makers.

Great coffee and food is an essential part of the Makers' Workshop experience; With the best waterfront views in town, the licensed café offers locally-roasted, barista made coffee, and caters for all tastes with a seasonal menu showcasing Tasmanian produce.

The Visitor Information counter is an accredited member of the Tasmanian Visitor Information Network. Friendly, passionate staff and volunteers will provide advice, maps and ideas, book an adventure or accommodation needs.

Since 2014 The University of Tasmania has co-ordinated Makers' Workshop in recognition of its importance as a place to celebrate and inspire the community.

In 2017 Tasmania's international arts festival Ten Days on the Island, relocated its festival headquarters to the mezzanine at Makers' Workshop.



For more information visit:  
**discoverburnie.net**

A background image showing a workshop setting with various paper samples and tools. In the foreground, there are two large sheets of paper. One is white with a green, textured pattern of stylized leaves or ferns. The other is dark brown with a similar textured pattern. A pair of scissors is visible on the dark brown paper. The background is slightly blurred, showing more paper and a wooden surface.

## CREATIVE PAPER

# TASMANIA

Creative Paper Tasmania is a boutique paper factory using ancient techniques in a modern factory setting, producing exquisite handmade paper and products.

We pride ourselves on making quality papers that are naturally Tasmanian and eco-friendly. With a focus on using recycled waste sourced from our local farmers, industries and from nature. The result is handmade papers perfect for special and artistic occasions!

Experience this ancient art when visiting Burnie and go on the enlightening Paper Tour Experience. Learn the science and art behind a product that is used in everyday life. Try your hand at making your own, and select a piece of paper with an Australian animals watermark as a memento.

### WHERE

Creative Paper is located within the tourism centre Makers' Workshop on the western side of Burnie's CBD, on the foreshore of West Beach.

Follow the signage for Burnie's accredited Visitor Information Centre (yellow i), and signage for Makers' Workshop.

### HISTORY

Burnie's transformation from a seaside port village into a booming paper town was realised by a group of optimistic entrepreneurs in the early 1900's.

New Zealander, Sir Gerald Mussen (1872 – 1960), pursued a grand vision to build a pulp and paper mill in Burnie, using eucalypt pulp. After decades of setbacks, the first paper rolled off the machine at Burnie's Pulp and Paper Mill in August, 1938.

### THE PAPERS

At Creative Paper Tasmania we pride ourselves on making quality handmade papers that are naturally Tasmanian and eco-friendly. With a focus on using recycled waste sourced from our local farmers,

industries and from nature. The result is handmade papers perfect for special and artistic occasions!

Using traditional papermaking techniques of the first century, each piece of paper is crafted by hand with the consumer in mind.

Our papers can be used in a wide variety of mediums; Watercolour, charcoal, paint, print, embossing, letterpress, printing, pen, photography, screen printing, collage.

View our Inspirations page to see where our papers have been used by writers, artists, painters, and scrapbook enthusiasts. You really are limited only by your creativity!

Paper size availability ranges from A5 to Imperial (762 x 559mm) and are available in packs or bulk purchase can be arranged. A range of stationery products have been developed to suit, writers, artists, scrapbook enthusiasts, or someone looking for that special souvenir.

### Features of Creative Paper products

- Tasmanian made
- A smooth to medium texture
- Internally sized (enables versatility)
- Easy to print on at home
- Truly authentic and uniquely handmade
- Acid free
- Eco friendly

Creative Paper would like to recognise Vincent Industries as one of its business partners. Since 1976 Vincent Industries has provided work and training opportunities for those with a disability in the North West of Tasmania. The business currently employs 40 individuals, with an emphasis on ability, not disability. Creative Paper relies on them to provide some of our recycled base products and a cutting service.



## WOMBAT POO PAPER

The plant fibre rich dung from one of Australia's iconic animals, combined with cotton, produces a slightly green speckled paper that is a fantastic backdrop to a range of mediums, or for that unique Australian souvenir.

## TOURS

Paper... it is used every day; writing, reading, information, creativity... have you ever thought about what goes into something you use so frequently?

Burnie has a 75 year tradition in paper making, which turned a seaside village into a booming industrial pulp and paper town. The industrial factory now closed, the city's association with paper continues today through Creative Paper Tasmania where you can experience an interactive hands-on papermaking tour.

Be introduced to this ancient art at the Creative Paper factory in its present day, ultra-modern setting at Makers' Workshop. The 30-minute tour takes visitors

on the illuminating journey of a commonplace material that is used in everyday life.

Learn ancient paper making techniques used to create beautiful, eco friendly Tasmanian papers. How materials such as recycled denim jeans, natural plant fibres, apples and even Roo Poo are used to make unique papers.

Explore the science, sustainability and recycling effort used by the boutique factory.

The Paper Making Tour is an interactive and hands on tour. You can touch the paper, feel the wet pulp between your fingers and be inspired by creating your own sheets of paper.

Choose a memento with an Australian animal water mark as a reminder of the experience.

Creative Paper is the only handmade paper factory in Tasmania offering a tour experience, and is one of only two within Australia.



For more information  
[creativepapertas.com.au](http://creativepapertas.com.au)

# KING ISLAND MUSIC FESTIVAL 2022



Festival Of King Island is already preparing an amazing FOKI 2022 (Wed 26<sup>th</sup> – Sat 29<sup>th</sup> January), combining Australia's best folk, country, blues & rock talent with Australia's best cheeses, beef and seafood... all wrapped in the good vibes of Australia's friendliest community.

FOKI 2022 will also take the opportunity to showcase the island's 130 year history of country races (gallops & pacers) kicking-off the Saturday, with the music firing up afterwards at the amazing Currie Harbour.

Each day visitors will be discovering the amazing coastline, wildlife and people of the island before coming together in the late afternoon to share Australia's best music, food and tales of lost trails,

animal-induced traffic jams, A-frame waves, underwater galaxies, sunken ships, fishy tales, deserted beaches and encounters with the friendly locals (2-legged, 4-legged, winged, and gilled).

For those seeking 9 days of getaway bliss by just taking off 4 days, then the weekend of the 22<sup>nd</sup> also has another King Island Race meeting taking place.

[foki.com.au](http://foki.com.au)

Accom/Cars: [kingisland.org.au](http://kingisland.org.au)

Updates: [FB/FestivalOfKingIsland](https://www.facebook.com/FestivalOfKingIsland)

Pics: [Michael Laskey](#)

Photography: [FB/michaellaskey118](https://www.facebook.com/michaellaskey118)

A photograph of four people birdwatching on a coastal hillside. In the foreground, a woman in a black jacket and blue jeans uses binoculars. To her left, a man in a green jacket and a woman in a green jacket and orange cap also use binoculars. In the background, another person in a blue shirt and hat takes a photo. The landscape is covered in low-lying green and yellow vegetation, with a rocky outcrop in the lower left. The ocean and a distant coastline are visible under a blue sky with light clouds.

# WINGS ON KING

## A PROJECT TO FIND AND TELL THE STORY OF KING ISLAND'S BIRDS

King Island acts as a biological stepping-stone between Tasmania and mainland Australia. For birds migrating North and South, the Island is a vital stopover to rest and refuel.

This project is being undertaken entirely by local volunteers and we need your help. Register for Wings on King, visit the island and help us discover and tell the stories of King Islands Birds



## WHY?

### KING ISLAND'S BIRDS:

Located in the middle of the Western entrance to Bass Strait, half-way between the mainland and Tasmania, King Island acts as a biological stepping-stone between the two, is home to many resident species including most of the Tasmanian endemics and boasts six King Island sub-species. Of these six, two are listed as Critically Endangered and two as Vulnerable. The other two we think are stable but we don't really know. A vital stopover for many birds migrating across Bass Strait, King Island is also the summer residence of international travellers such as the Ruddy Turnstone and breeding migrants such as Short-tailed Shearwaters. The coast of King Island is an internationally nominated Key Biodiversity Area (KBA). Despite King Island being such an important location for birds, we know very little about the conservation

status of the land birds of King Island or its value to birds migrating across Bass Strait. How important is it to them?

### KING ISLAND'S FUTURE:

The fact that four King Island subspecies are listed as threatened, indicates that there is already a loss of biodiversity and habitat on King Island. With increasing pressure on the island's biological systems from human activities including climate change, we need to have a method of monitoring the sustainability or environmental health of the whole island.

Using changes in bird populations as indicators of overall environmental change, is a well recognised, scientifically valid method of doing this. Given the number of important and threatened birds that live or utilise King Island, it is also the obvious method to choose.



## WHAT?

Long-term, systematic monitoring of land-birds has never been undertaken on King Island. 21 sites were set up in 2001 and monitored twice, but until now have not been monitored again. Although there is random incidental monitoring of birds on the Island which provides important information, its use for conservation management is limited. Wings on King will gather data from established sites situated across the island, on a regular and long-term basis so that changes can be identified over time.

## HOW?

### PROJECT OVERVIEW

- 50 established monitoring sites are situated in differing land usage zones, landscape elements, vegetation communities and habitat qualities on both private and public land.
- Surveys are undertaken as often as possible, with organised events in spring and autumn.
- As King Island has a small human population of about 1600, the human resources aren't available to undertake all the monitoring ourselves, so we are

inviting bird enthusiasts to visit the island and help us gather the data.

- Participants require registration to ensure they are covered by insurance and to allow the project team to ensure all the sites are monitored at some stage.

### We aim to:

- Monitor the presence, absence and populations of the land birds of King Island;
- Establish current population levels of the King Island subspecies and monitor these in the future;
- Establish how the Bass Strait migrating birds use the Island when they are here;
- Watch for evidence of southward drifts in distribution ranges of mainland land birds.

### How will the data be used?

- Changes in populations and status of both common and endangered birds, will alert us to changes in the natural environment and allow targeted conservation initiatives.
- Arrival and establishment of new or previously irregular bird visitors may indicate southward drifts in distribution ranges of mainland land birds in response to a changing climate.



## AUTUMN 2021 SURVEY WEEKEND

### 22<sup>ND</sup> - 25<sup>TH</sup> APRIL

In 2020 we of course, weren't able to complete our program due to COVID but using an adapted method and just a few locals we managed to get all the surveys completed twice - being 60 sites x 2. So we were pretty chuffed about that. See reports: <https://www.birdsofkingisland.com/news>

This year we hope things will be normal, but never-the-less are planning a more subdued weekend. The caveat is COVID though, so people need to keep an eye on the website <https://www.birdsofkingisland.com/launch-2017>

or become a member of the Birds of King Island Facebook <https://www.facebook.com/BirdsOfKingIsland/>

so they can confirm what's happening closer to the time. They can also email us via the website.

Exactly how we do the surveys, will also depend on how many registrations we receive. But all being well, here's the plan.



Participants must register at:  
[birdsofkingisland.com/register](https://www.birdsofkingisland.com/register)

## APRIL WEEKEND AGENDA:

### THURSDAY 22<sup>ND</sup> APRIL

4.30-5.30 : Workshop 'Birding for Beginners' (maximum 6 attendees. Bring own binoculars) King Island Cultural Centre.  
5.30-7.00 : Welcome, registration and orientation

### FRIDAY 23<sup>RD</sup> - SATURDAY 24<sup>TH</sup> APRIL

Bird surveys across the island

**Saturday 24th April:** 'Wings on King' Dinner with guest speaker (Speaker, subject and venue to be confirmed)

### SUNDAY 25<sup>TH</sup> APRIL

Complete surveys if necessary.  
Searching for KI's Threatened Species: Led morning excursion (TBC)

2021 Spring Surveys will be held November 11-14th. Details will become available on the BOKI website and Facebook closer to those dates.

# STAY LOCAL. EAT LOCAL. FLINDERS ISLAND

On Island Time closes the gap for visitors and locals alike serving up local produce.





# MOTHER'S DAY GIFTS

When visiting Flinders Island you'll discover that food has long been a focal point of the culture. Diving, foraging, fishing and hunting are a way of life for residents, not to mention a huge drawcard for adventure-seeking visitors.

For those that may not have the time or the skills, but want access to an array of local delights, On Island Time offers catering packages to all guests across their accommodation portfolio including The Cray Shack, Wombat Lodge and Dwarf Cottage. Chef, Mikey Yeo, sources ingredients from local butchers, farmers and fisherman to create inspired menus to be enjoyed in the luxury of one the cosy lodgings managed by owner and Founder of On Island Time, Jo Youl.

A mainstay on the menu is gummy shark, caught on the island. One of Mikey's favourite ways to prepare this fish is in the outdoor wood fire smoker at The Flinders Wharf. He uses this locally-built smoker to cook meats, vegetables and create sauces that all feature in his seasonal catering packs.

Packages include breakfast, lunch, dinner and snacks; all of which can be pre-ordered for delivery, or to pick up on your arrival to the island. Meals come labelled with preparation cooking and serving guides.

For a taste of what you might receive, check out Mikey's recipe for Gummy Shark Croquettes (or try cooking this at home!).

## RECIPE GUMMY SHARK CROQUETTES

### Ingredients

- 5 x large kennebec potatoes, boiled
- 100g parmesan, grated
- zest x 2 lemons
- 1/2 bunch parsley, finely chopped
- 3 tbsp olive oil
- 200g smoked gummy shark, shredded salt & pepper
- vegetable oil for frying
- Panko crumbs
- Egg wash
- Plain flour

### Method

1. Roughly mash potatoes in a bowl
2. Add all other ingredients
3. Mix and season to taste
4. Mould into thick ngers
5. Crumb well
6. Deep fry at 175c for 4 minutes

Serve with saltbush mayonnaise or Jon the Jugglers hot sauce.

Packages start from \$25pp Breakfast, \$35pp Lunch and \$65pp Dinner.

Accommodation managed by On Island Time:  
Wombat Lodge & Dwarf Cottage at Quoin Farm  
& The Cray Shack at Killiecrankie Beach.



For further information and bookings visit:  
[onislandtime.com.au](http://onislandtime.com.au)



Make Mum smile this Mother's Day  
with some hard to find gifts



## HANKIES

### A Little Piece of Luxury for Mum

Gifts don't need to be big or grand they just need to be memorable.

Handkerchiefs are more than a piece of fabric, they are memory makers, fashion accessories, security blankets and the perfect gift who those who have everything and want nothing.

- ♥ Create own Gift Box
- ♥ 100% Cotton
- ♥ Locally made in Ballarat, Victoria
- ♥ Environmentally friendly packaging
- ♥ Made in small, medium & large with 1cm height

You will be the favourite child when you give mum a beautiful Gift Box of Liberty Handkerchiefs. A gift that only she can use and be make her think of your every time she uses them.

Give a little gift and make some beautiful memories

**Boutiqueheidi.com**

## OLIVE OIL

Flinders Island Olive Oil is made from the is the only commercial grove on Flinders Island. The grove and processing facilities are fully certified organic.

250ml bottle Flinders Island Organic Extra Virgin Olive Oil

**\$16.50**

**flindersislandoliveoil.com**



## TASMANIAN HAND MADE JOURNAL

Creative Paper Tasmania is a boutique paper factory using ancient techniques in a modern factory setting, producing exquisite handmade paper and products.

Gorgeously covered in embossed Artist Paper, the portrait orientated 30 page journal is a wonderful way to preserve your thoughts, notes and ideas.

Every Journal is unique and something you mum will treasure.

**\$29.00**

**creativepapertas.com.au**

## FURNEAUX DISTILLERY

Using 100% Tasmanian malt barley, pure rainwater and a unique local peat which is at once earthy and briny. It is a sustainable and renewable resource which spends a good portion of the year submerged in the salt lakes and lagoons of the wild east coast of Flinders Island. We then complete the production of our spirits from start to finish at The Flinders Wharf, from the peat smoking of the barley in a mobile malt kiln to the bottling and distribution.

**Untamed Gin from \$35**

**furneauxdistillery.com.au**



## OUR TOP 5 STYLES FOR MUM

Make mum a rockstar with Designer quality for under \$160.

### Ninety-Nine Snow – RRP \$159

Make a statement with the vintage inspired cats-eye Ninety-Nine Snow. Designed to be oversized, Ninety- Nine Snow can take you from 'roadie' to ROCK STAR all in a matter of moments!

### Magenta Blush – RRP \$159

Soft and feminine, this geometric style compliments any face with its subtle blush tones. Featuring a modern clear frame with peaked brows, Magenta Blush will have you feeling sexy, confident and cool.

### Simba Black Demi – RRP \$159

Forever flattering, the iconic round shape is given a modern twist in Simba Black Demi. Featuring black & grey demi frame with spliced black frame corners and temple tips, this unique frame will have you feeling effortlessly cool in no time.



### Iris Demi – RRP \$159

Inspired by fearless fashionista Iris Apfel, Iris Demi features an uncommon pink gradient lens and tortoiseshell frame with delicious violet and caramel highlights. Add a touch of style to any outfit with Iris Demi and take yourself from feeling invisible to invincible!

### Atomic Black – RRP \$159

Rock your inner rebel in Atomic Black inspired by rock heroine Debbie Harry. This petite frame atters most face shapes and features an angled cats-eye frame with unique white and tortoiseshell highlights on the temple.

## THE SUNNIE SIDE OF FASHION

Give Mum the confidence that comes from not just feeling great, but knowing she looks great in a quality pair of designer sunnies. Designed in Melbourne, all Life Less Common Sunglasses are polarised for 100% UV protection and prescription friendly! Shop now at **lifelesscommon.com**

# URBAN ABORIGINAL EXPERIENCES

Melbourne has a rich history Aboriginal culture as a significant meeting place for social, sporting, educational and cultural events dating back more than 40,000 years.

Visitors can learn the history of the Kulin Nation through unique inner-city experiences to gain a deep understanding of the city's traditional owners and most revered places of significance to Aboriginal people.

## ROYAL BOTANIC GARDENS

Melbourne's Royal Botanic Gardens is a significant cultural site for the local Kulin (Koolin) Nation and home to a number of Indigenous experiences that journey into their ancestral lands and explore their rich culture. Visitors can step into the award-winning Blak Box pavilion for SEASONS, an Indigenous deep listening experience from 6 March – 5 April. The multi-part sound work invites audiences to experience climatic and seasonal variation less as a weather event and more as a cultural phenomenon in an award-winning sound pavilion. The Gardens offers a number of experiences throughout the year, including the Royal Botanic Gardens Aboriginal Heritage Walk which takes visitors on a journey through a traditional meeting place and ancestral lands. The walk through these lush

surrounds includes a traditional smoking ceremony with an Aboriginal guide who also explains the traditional uses of plants for food, tools and medicine as well as discussing the history and contemporary life of their people. Foodies can delve into the local First People's rich history, thriving culture and their connection to plants with a Bush Food Experience. Learn how Australian bush foods have inspired the modern plate and palate, and how native plants have been traditionally used and continue to be used around the world today. The Bush Food Experiences is capped off with tastings of delicious canapes inspired by the native plants seen on your walk, developed and prepared by trainee chefs from iconic social enterprise restaurant Charcoal Lane. Birdwood Ave, South Yarra, Victoria, Australia, 3141. (03) 9252 2300.



Bunjilaka Aboriginal Cultural Centre  
at Melbourne Museum  
Credit: Visit Victoria

## BUNJILAKA ABORIGINAL CULTURAL CENTRE

At the Melbourne Museum, visitors can learn about the diverse and vibrant cultures of Indigenous Australia at the Bunjilaka Aboriginal Cultural Centre. The centre houses the First Peoples exhibition which is a collection of the many tools and artefacts of Indigenous Australia, cutting-edge digital displays, through to an outdoor garden featuring native plants and eels all in the one location. Bunjilaka Aboriginal Cultural Centre also offers The First Peoples Tour which is a 1.5 hour guided journey with Aboriginal guides through the First Peoples exhibition. The guides will help uncover the rich Aboriginal history of Victoria from 40,000 years ago to more contemporary history around Aboriginal struggles and triumphs. Bunjilaka

Aboriginal Cultural Centre, Melbourne Museum, 11  
Nicholson Street, Carlton, Victoria, Australia, 3053.

## KOORIE HERITAGE TRUST

Located at Federation Square in Melbourne's city centre, The Koorie Heritage Trust was set up to protect, preserve and promote the living culture of Indigenous peoples from Australia's south east. The Koorie Heritage Trust holds an extensive collection of Koorie artworks and objects, art exhibitions, a gift shop and conducts tours with Aboriginal guides. Birrarung Wilam (River Camp) Walk covers local Aboriginal culture against a backdrop of Melbourne's most iconic landmarks. One of these landmarks is the Birrarung Wilam (Common Ground) which was a significant meeting place for the Kulin Nation, past Aboriginal



Koorie Heritage Trust  
Credit: Artra Sartracom

art installations where visitors can learn about the Aboriginal history of the Birrarung Marr (Yarra River) and the Aboriginal Peoples of the Kulin Nation. The Scar Tree Walk is a cultural journey that connects traditional and contemporary Aboriginal cultures and histories of the local Kulin Peoples from Federation Square to the culturally protected heritage site that surrounds the Melbourne Cricket Ground. Levels 1 & 3, The Yarra Building, Federation Square, Cnr Swanston & Flinders Streets, Melbourne, Victoria, 3000.

**THE IAN POTTER CENTRE:  
NATIONAL GALLERY OF  
VICTORIA (NGV) AUSTRALIA AT  
FEDERATION SQUARE**

The Ian Potter Centre at Federation Square is the world's first major gallery dedicated exclusively to Australian art, and features a suite of galleries showcasing Aboriginal and Torres Strait Islander art. With free entry to the permanent exhibitions, the NGV collection of Australian art comprises more than 20,000 works. Approximately 800 works are displayed in the new building at one time, and many of these will be rotated frequently to show the full breadth and diversity of Australian art, and to provide visitors with fresh insights. Corner Flinders Street and Russell Street, Federation Square, Melbourne, Victoria, 3000. (03) 8620 2222.

Source [visitvictoria.com](http://visitvictoria.com)

**CHARCOAL LANE**

Fitzroy's Charcoal Lane dishes up gourmet native Australian flavours by young Aboriginal people who are in need of a fresh start in life. A Mission Australia social enterprise restaurant, Charcoal Lane specialises in fine-dining bush fare. The aim of the program is to create a skilled workforce for the hospitality industry, providing leadership and mentoring to help vulnerable young people achieve their potential and gain long-term independence and sustainable mainstream employment. 136 Gertrude St, Fitzroy, Victoria, 3065. (03) 9418 3400.

**MABU MABU**

After earning a reputation as a catering company dishing up fresh, seasonal and native fare, Mabu Mabu has opened its first permanent offering in Melbourne's inner-west neighbourhood of Yarraville. Originally from Mer Island in the Torres Strait, head chef Nornie Bero uses a variety of indigenous herbs, fruits, succulents and spices to create a truly Australian cuisine. Named after a Torres Strait term that translates to 'help yourself', Mabu Mabu celebrates Indigenous cultural with contemporary Indigenous flavours in a compact brunch-to-lunch menu that bring people together. 13 Anderson St, Yarraville, Victoria, Australia, 3013.

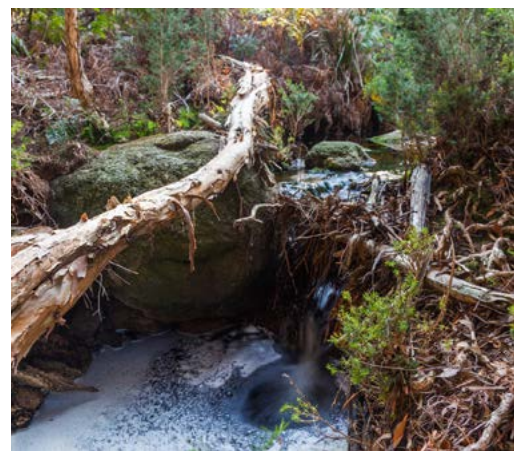
# WHERE WE FLY

## CHOOSE YOUR DESTINATION



 **sharp airlines**  
*Our people make the difference*

## Ta Meri - Earth Beloved of Heaven.



## 811 Trousers Point Road, Flinders Island TAS.

**For Sale** By Offer.



Pristine environment



3 bed/office  
3 bath  
homestead



Equipment  
available by  
negotiation



Great location



25 Ha (approx)



Organic  
certification

Located at the foot of Mt Strzelecki on 25ha of gentle sloping land, bordering the National Park.

Ta Meri is a unique & spectacular property that is ideally suited to a multiple of uses. Live, work or unleash the untapped potential in this pristine environment.

Live in the comfortable Homestead, further develop the accommodation with a Studio & Dancing Yurt. Plans are available for further accommodation to be built.

Certified organic, with a health-dept.-approved processing area. Water flows all year from a stream fed by Mt. Strzelecki, making this perfect for a sustainable and creative life style. Includes a large, functional artists' studio.

Rounding out Ta Meri, machinery shed & a managers residence separate from the Homestead/accommodation.

Machinery & vehicles can be negotiated with the sale.

Office: **54 Cameron Street, Launceston TAS.** Ph: **6333 7888**

Rodney Rawlings **0419 323 626**

[knightfrank.com.au](http://knightfrank.com.au)

Connecting people & property, perfectly.

Commercial Sales • Commercial Leasing • Hotel & Tourism Sales • Business Sales • Asset Management • Valuations & Consultancy